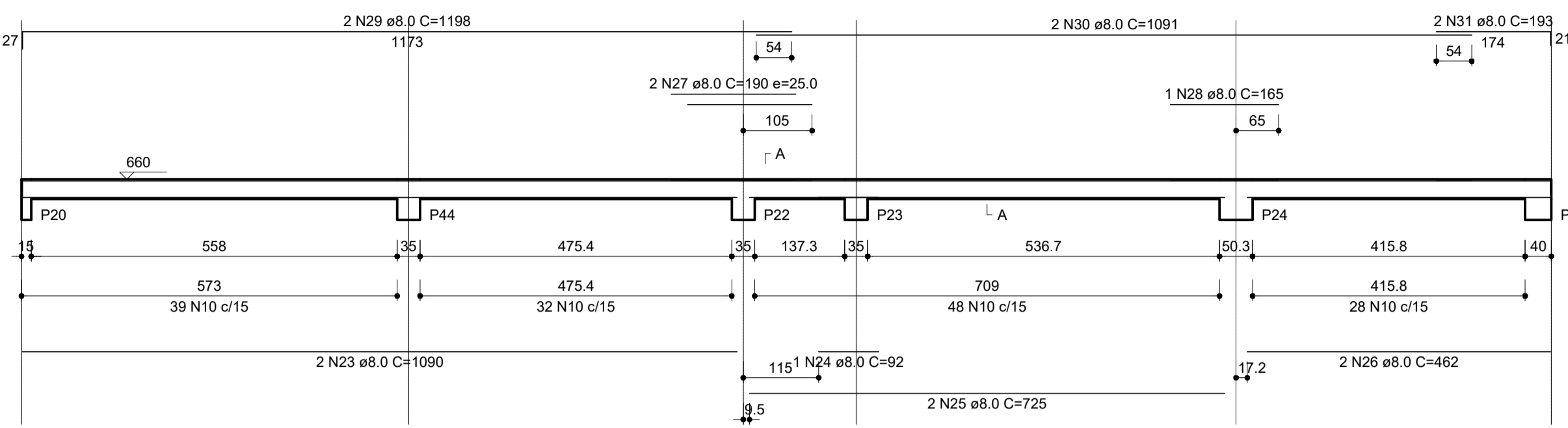
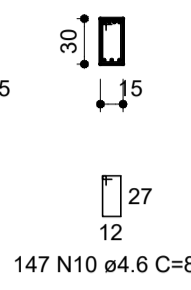


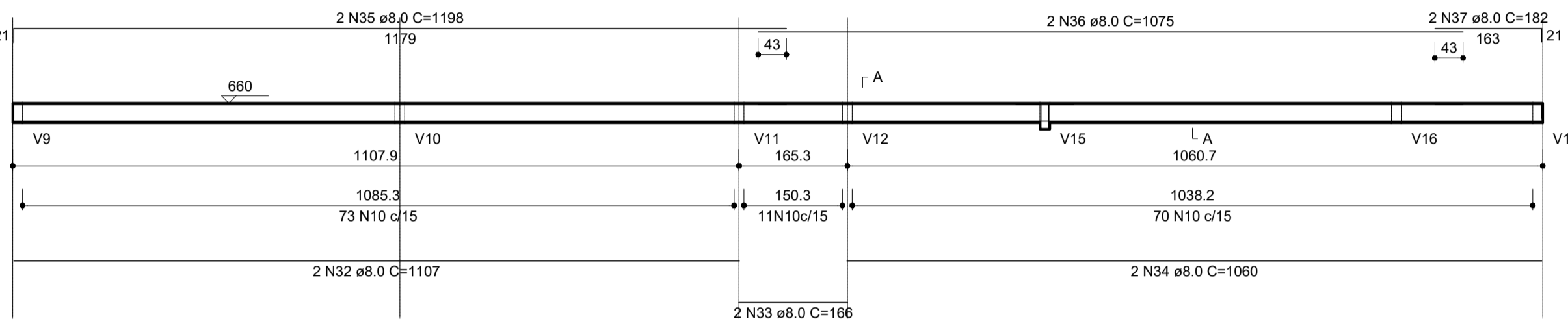
V1
ESC 1:75



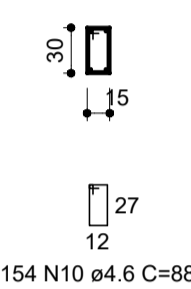
SEÇÃO A-A
ESC 1:50



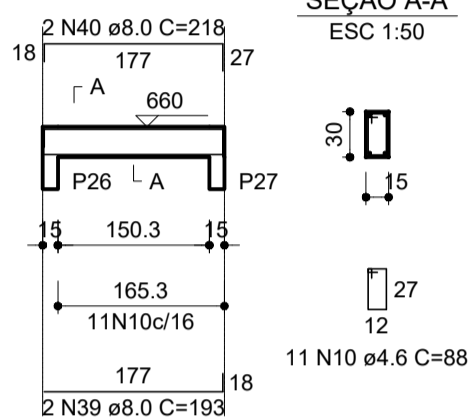
V2
ESC 1:75



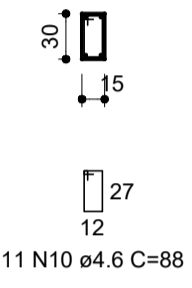
SEÇÃO A-A
ESC 1:50



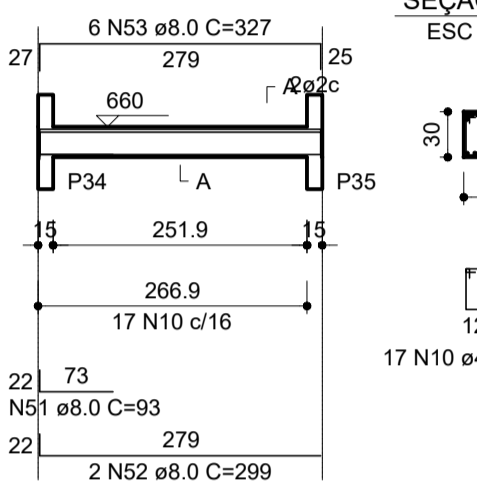
V3
ESC 1:75



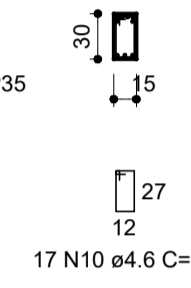
SEÇÃO A-A
ESC 1:50



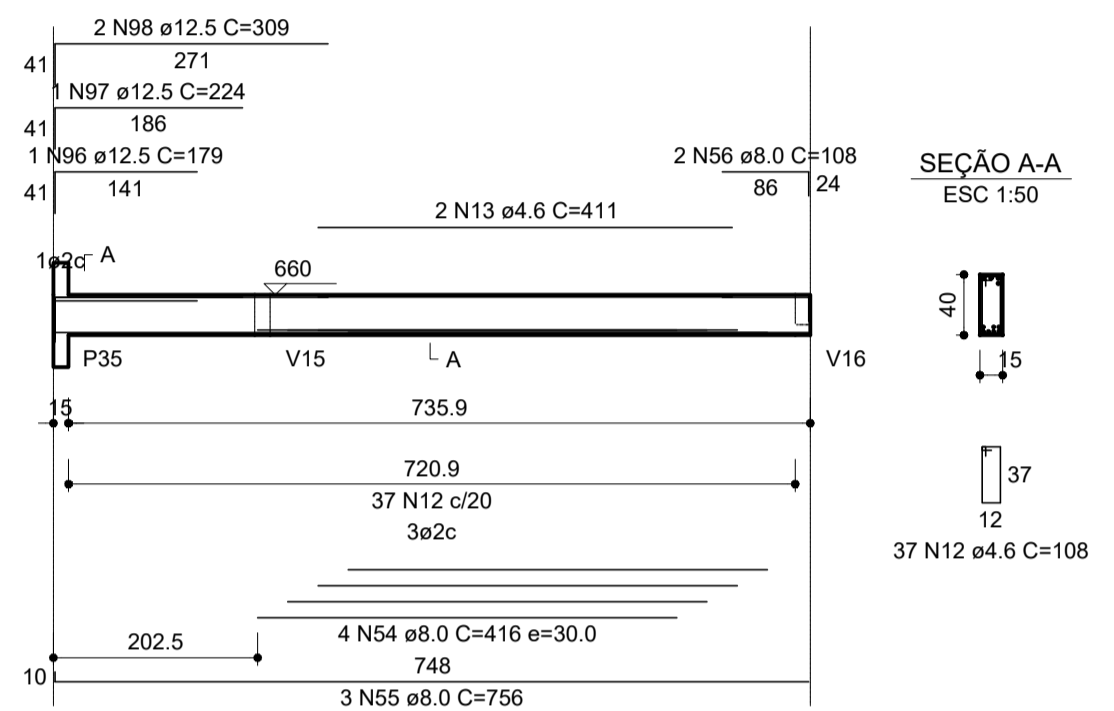
V5
ESC 1:75



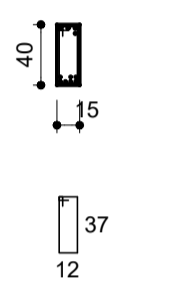
SEÇÃO A-A
ESC 1:50



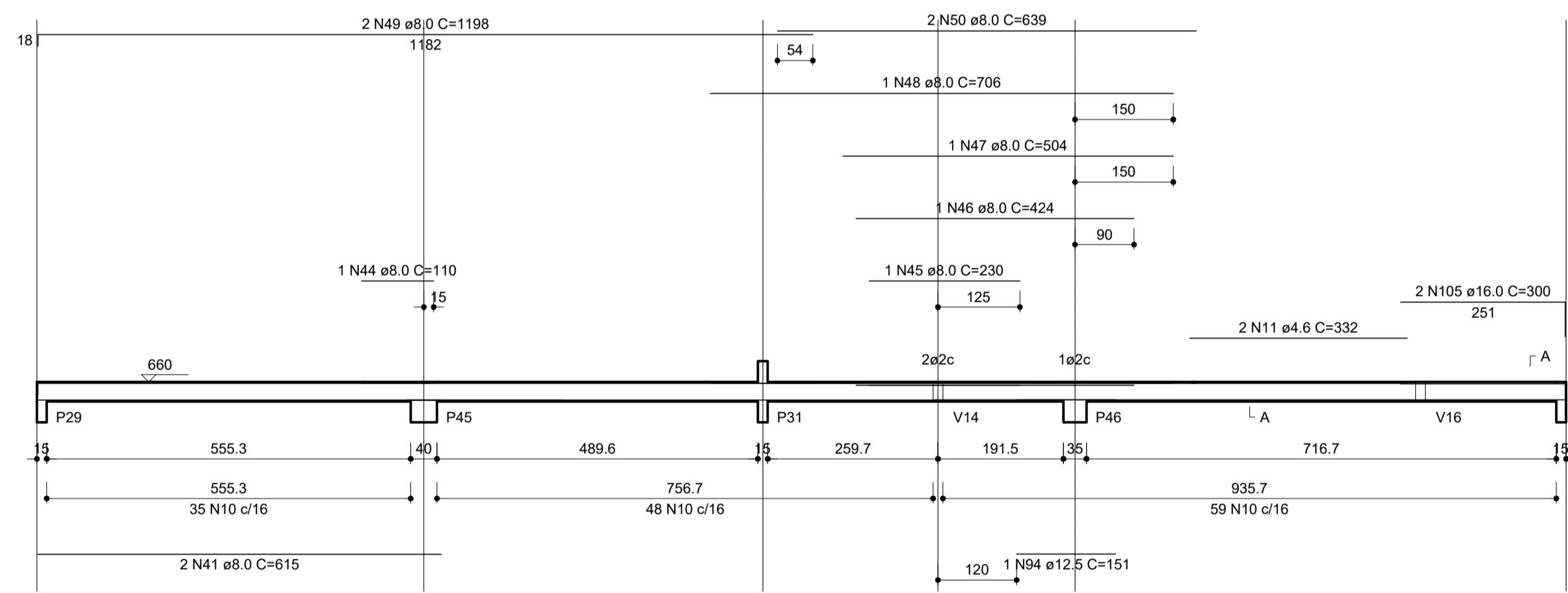
V6
ESC 1:75



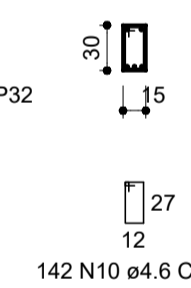
SEÇÃO A-A
ESC 1:50



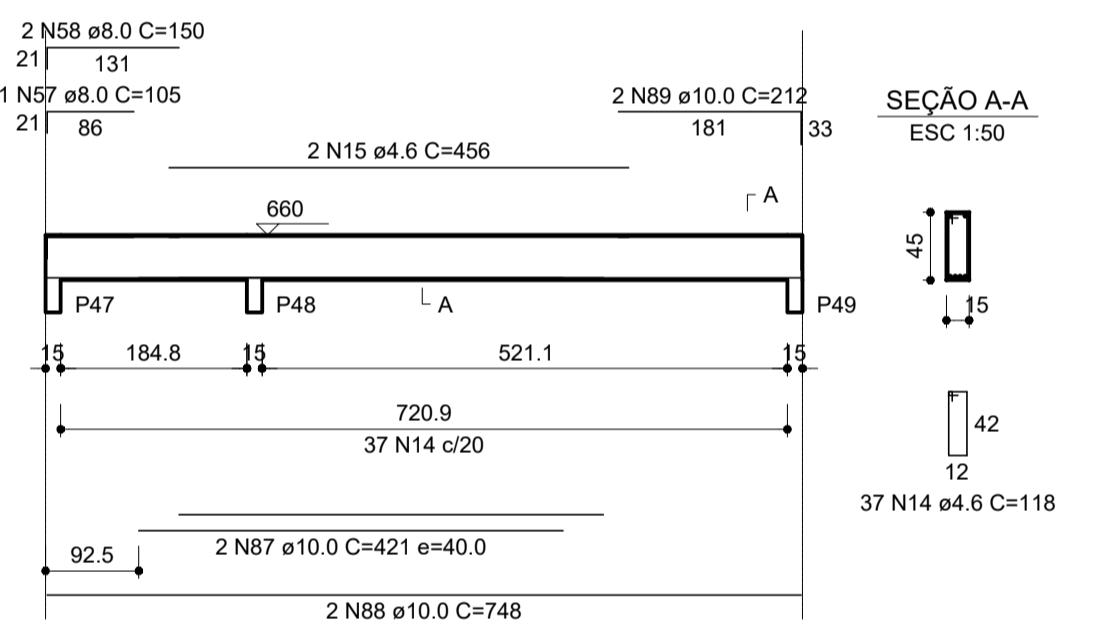
V4
ESC 1:75



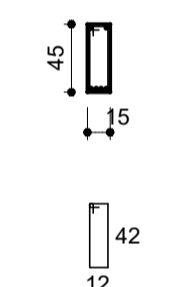
SEÇÃO A-A
ESC 1:50



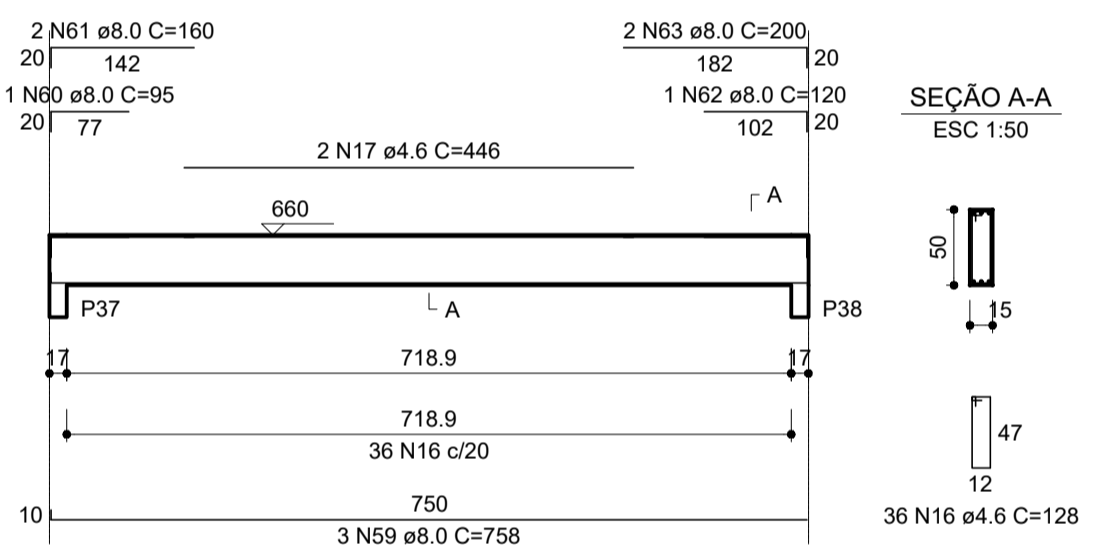
V7
ESC 1:75



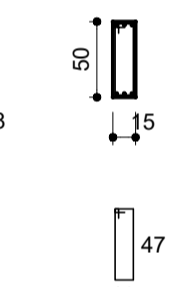
SEÇÃO A-A
ESC 1:50



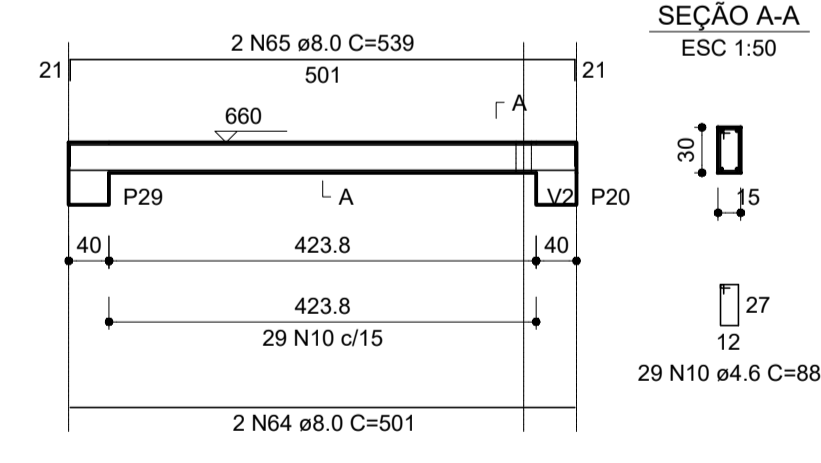
V8
ESC 1:75



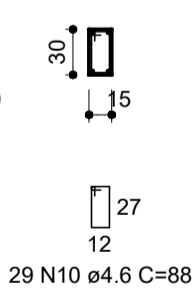
SEÇÃO A-A
ESC 1:50



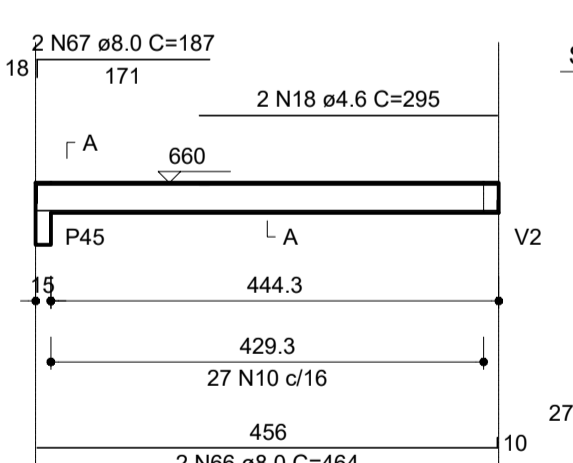
V9
ESC 1:75



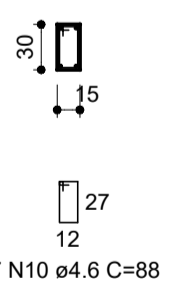
SEÇÃO A-A
ESC 1:50



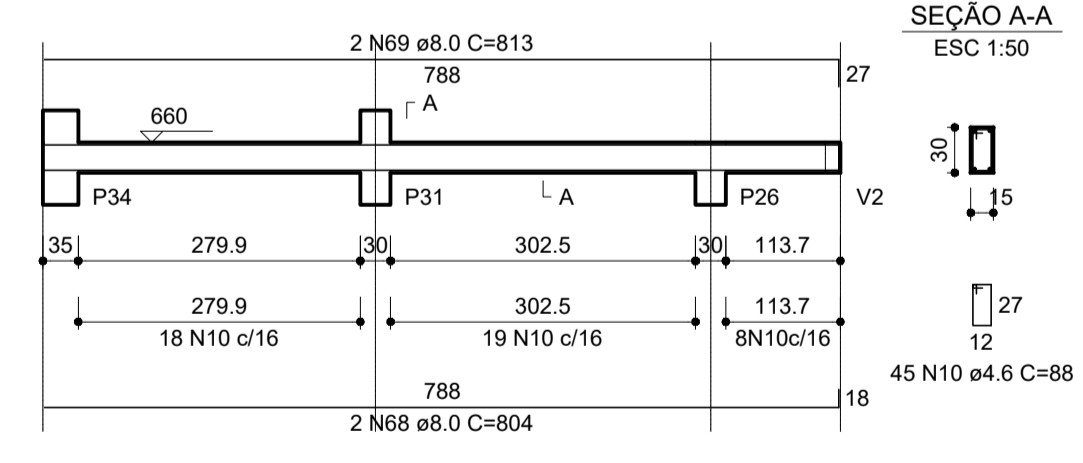
V10
ESC 1:75



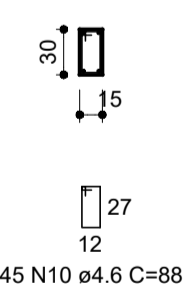
SEÇÃO A-A
ESC 1:50



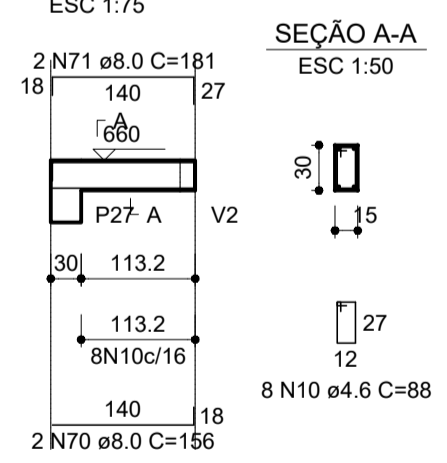
V11
ESC 1:75



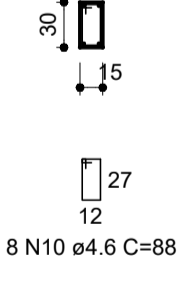
SEÇÃO A-A
ESC 1:50



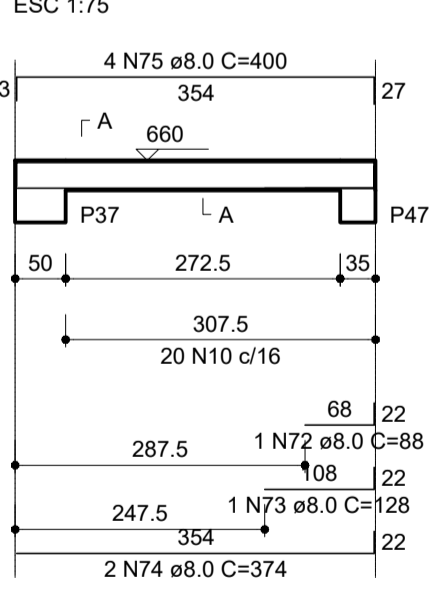
V12
ESC 1:75



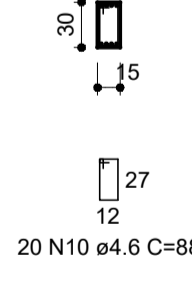
SEÇÃO A-A
ESC 1:50



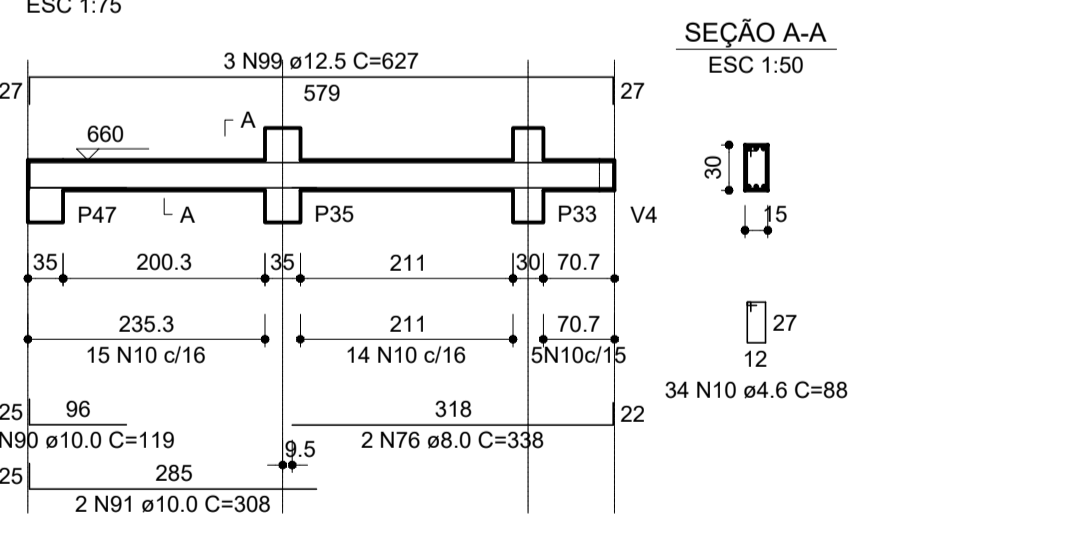
V13
ESC 1:75



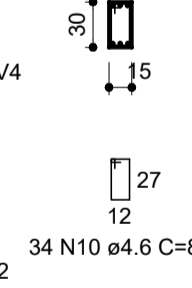
SEÇÃO A-A
ESC 1:50



V14
ESC 1:75



SEÇÃO A-A
ESC 1:50



RELAÇÃO DO AÇO

P20	P22	P23
P24	P25	2xP26
P29	P31	P32
P33	P34	P35
2xP37	P44	P45
P46	P47	P48
P49	V1	V2
V3	V4	V5
V6	V7	V8
V9	V10	V11
V12	V13	V14
V15	V16	V17

AÇO	N	DIAM (mm)	QUANT	C.UNIT (cm)	C.TOTAL (cm)
CA60	1	4.2	440	26	11440
CA60	2	4.2	116	109	12644
CA60	3	4.2	194	99	19206
CA60	4	4.2	168	26	4368
CA60	5	4.2	22	159	2838
CA60	6	4.2	134	89	11926
CA60	7	4.2	168	28	4704
CA60	8	4.2	56	233	13048
CA60	9	4.2	88	27	2376
CA60	10	4.6	747	88	65736
CA60	11	4.6	2	332	664
CA60	12	4.6	86	108	9288
CA60	13	4.6	2	411	822
CA60	14	4.6	37	118	4366
CA60	15	4.6	2	912	1824
CA60	16	4.6	36	128	4608
CA60	17	4.6	2	446	892
CA60	18	4.6	2	235	470
CA60	19	4.6	2	235	470
CA60	20	4.6	2	292	584
CA60	21	4.6	2	272	544
CA60	22	6.3	1	77	77
CA60	23	8.0	2	1090	2180
CA60	24	8.0	1	92	184
CA60	25	8.0	2	725	1450
CA60	26	8.0	2	462	924
CA60	27	8.0	2	190	380
CA60	28	8.0	1	165	165
CA60	29	8.0	2	1198	2396
CA60	30	8.0	2	1091	2182
CA60	31	8.0	2	193	386
CA60	32	8.0	2	1107	2214
CA60	33	8.0	2	166	332
CA60	34	8.0	2	1060	2120
CA60	35	8.0	2	1108	2216
CA60	36	8.0	2	1075	2150
CA60	37	8.0	2	182	364
CA60	38	8.0	2	193	386
CA60	39	8.0	2	193	386
CA60	40	8.0	2	218	436
CA60	41	8.0	2	615	1230
CA60	42	8.0	1	241	241
CA60	43	8.0	2	811	1622
CA60	44	8.0	1	110	110
CA60	45	8.0	1	230	230
CA60	46	8.0	1	424	424
CA60	47	8.0	1	504	504
CA60	48	8.0	1	706	706
CA60	49	8.0	2	1198	2396
CA60	50	8.0	2	639	1278
CA60	51	8.0	1	93	93
CA60	52	8.0	2	299	598
CA60	53	8.0	6	327	1962
CA60	54	8.0	4	416	1664
CA60	55	8.0	3	756	2268
CA60	56	8.0	2	108	216
CA60	57	8.0	1	105	105
CA60	58	8.0	2	150	300
CA60	59	8.0	3	758	2274
CA60	60	8.0	1	95	95
CA60	61	8.0	2	160	320
CA60	62	8.0	1	120	120
CA60	63	8.0	2	200	400
CA60	64	8.0	2	501	1002
CA60	65	8.0	2	539	1078
CA60	66	8.0	2	464	928
CA60	67	8.0	2	187	374
CA60	68	8.0	2	804	1608
CA60	69	8.0	2	815	1630
CA60	70	8.0	2	156	312
CA60	71	8.0	2	181	362
CA60	72	8.0	1	88	88
CA60	73	8.0	1	128	128
CA60	74	8.0	2	374	748
CA60	75	8.0	4	400	1600
CA60	76	8.0	2	338	676
CA60	77	8.0	2	1033	2066
CA60	78	8.0	2	231	462
CA60	79	8.0	2	320	640
CA60	80	8.0	2	345	690
CA60	81	8.0	2	459	918
CA60	82	8.0	2	535	1070
CA60	83	8.0	2	504	1008
CA60	84	8.0	2	548	1096
CA60	85	10.0	60	328	19680
CA60	86	10.0	12	363	4356
CA60	87	10.0	2	421	842
CA60	88	10.0	2	748	1496
CA60	89	10.0	2	212	424
CA60	90	10.0	1	119	119
CA60	91	10.0	2	308	616
CA60	92	12.5	82	328	26896
CA60	93	12.5	16	372	5952
CA60	94	12.5	1	151	151
CA60	95	12.5	2	962	1924
CA60	96	12.5	1	179	179
CA60	97	12.5	1	224	224
CA60	98	12.5	2	309	618
CA60	99	12.5	3	627	1567.5
CA60	100	12.5	2	557	1114
CA60	101	12.5	1	215	215
CA60	102	12.5	1	260	260
CA60	103	12.5	2	607	1214
CA60	104	16.0	30	328	9840
CA60	105	16.0	2	300	600

RESUMO DO AÇO

AÇO	DIAM (mm)	C.TOTAL (m)	PESO (kg)
CA50	6.3	0.8	0.19
CA50	8.0	865	231.07
CA50	10.0	275.3	169.96
CA50	12.5	406.3	391.26
CA50	16.0	104.4	164.74
CA50	4.2	825.5	89.97
CA50	4.6	894.8	117.21
PESO TOTAL (kg)			
CA50	957.12		
CA60	207.18		

Volume de concreto (C-30) = 12.10 m³
Área de forma = 203.74 m²

MINISTÉRIO DA DEFESA	ANO	TIPO	FOLHA	PREFEITURA MUNICIPAL DE ITAUBAL DO ESTADO DO AMAPÁ
PCN	2022	EST	08/19	
Programa Galvão Norte				
CONVENIÊNTE	PREFEITURA MUNICIPAL DE ITAUBAL - AP	LOCAL	MUNICÍPIO DE ITAUBAL - AP	MODIFICAÇÕES
OBRA	REVITALIZAÇÃO E AMPLIAÇÃO DO PRÉDIO ADMINISTRATIVO DA PREFEITURA DETALHES VIGAS SUPERIORES			ÁREA
				A -
				B -
				C -
AUTOR	PAULO HENRIQUE GUIMARÃES TEIXEIRA ARQUITETO & URBANISTA - CAU 113852-4	DESENHADOR	PAULO HENRIQUE GUIMARÃES TEIXEIRA	DATA
				OUTUBRO 2022
PREFEITO	JOSÉ SERAFIM PICAÇÃO FILHO	VISTO	DM	METRO
				E -
COORDENADAS	9°36'11.4"N 50°41'51.7"W			F -