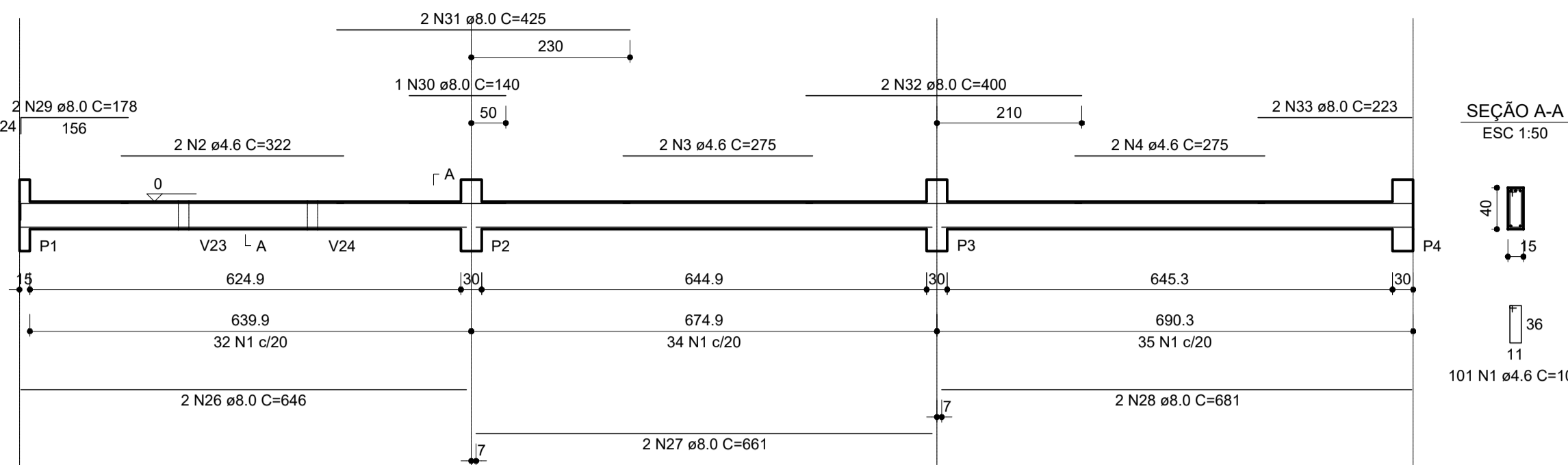
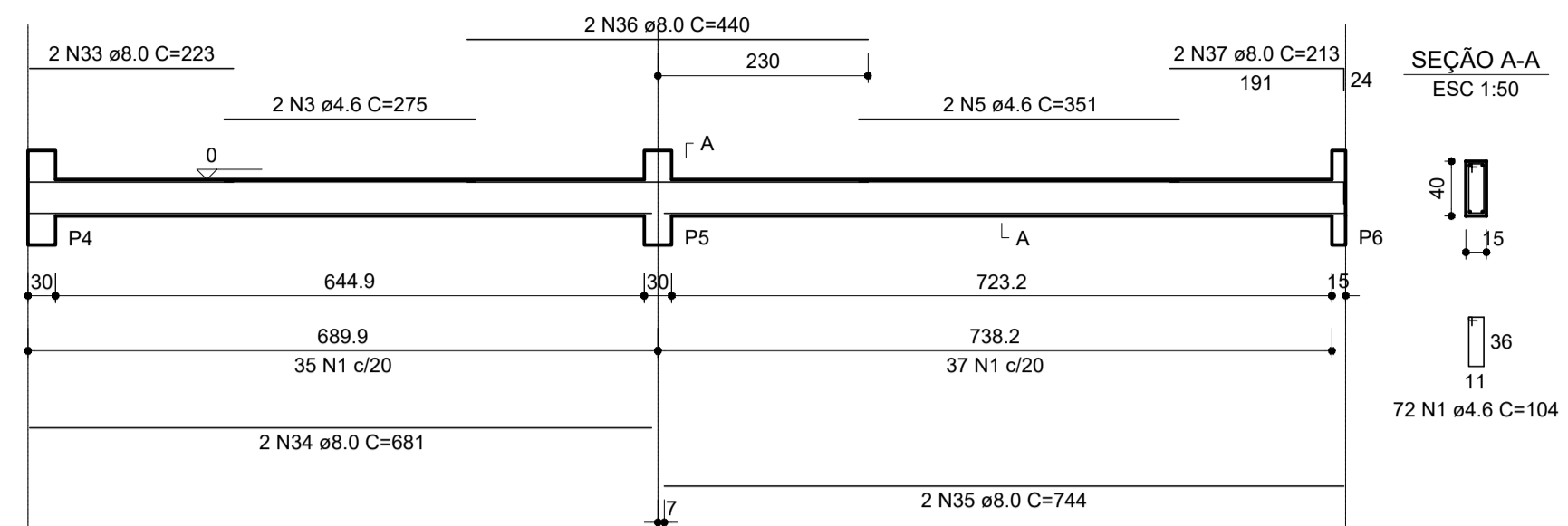


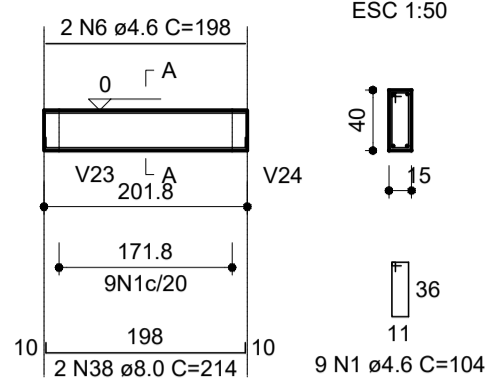
V1
ESC 1:75



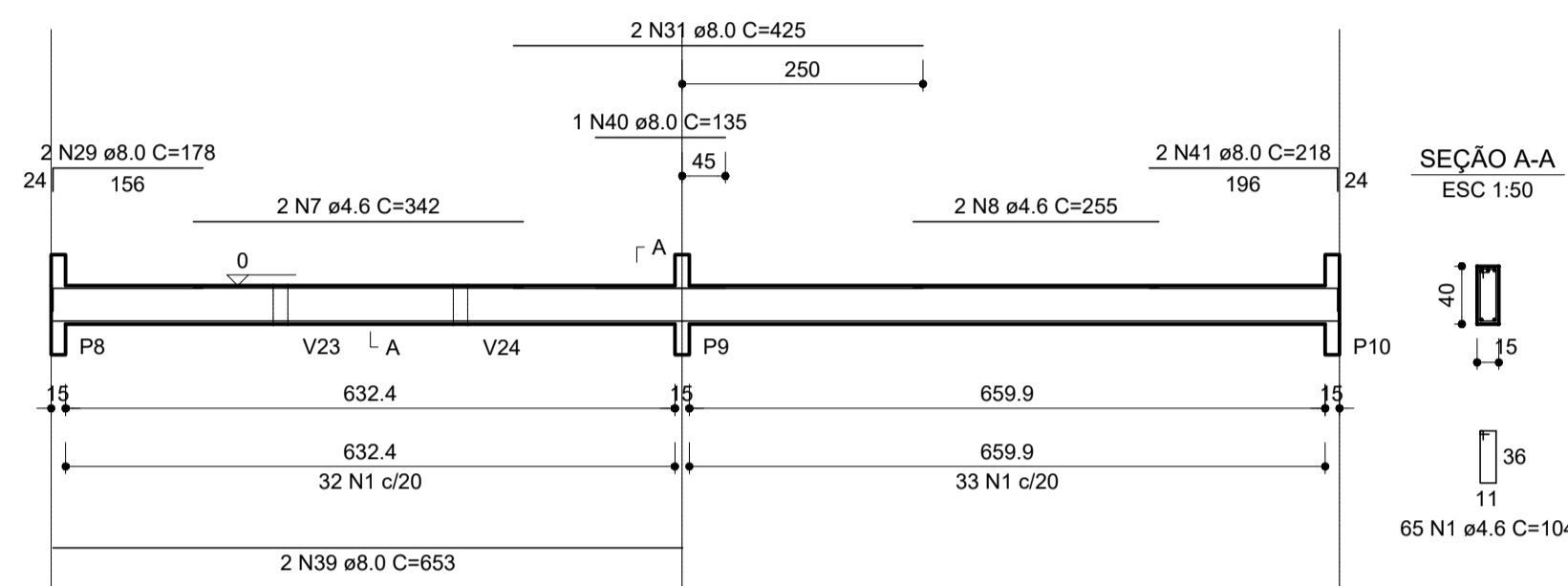
V2
ESC 1:75



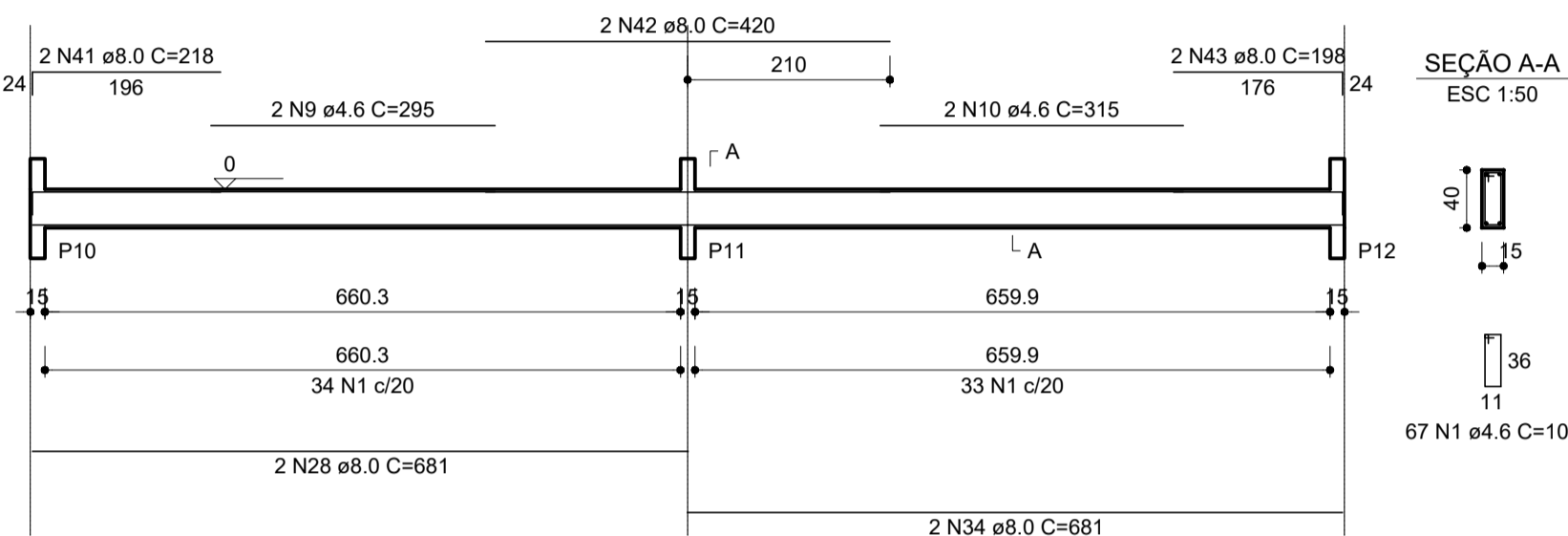
V3
ESC 1:75



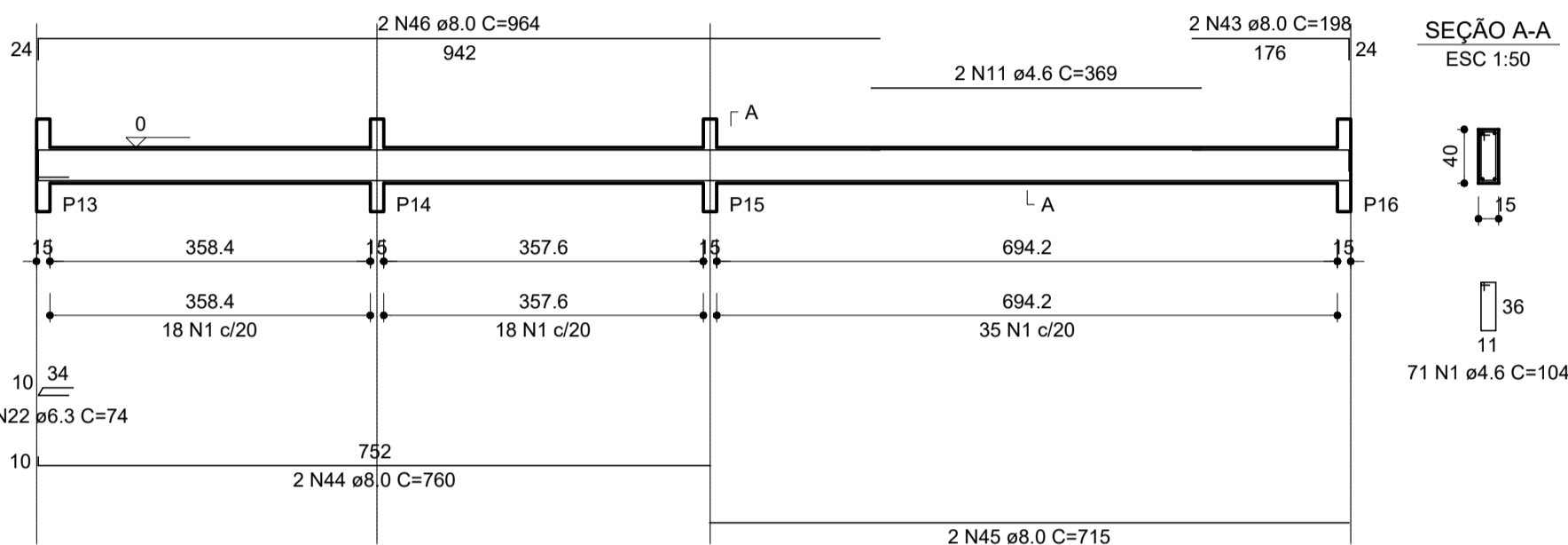
V4
ESC 1:75



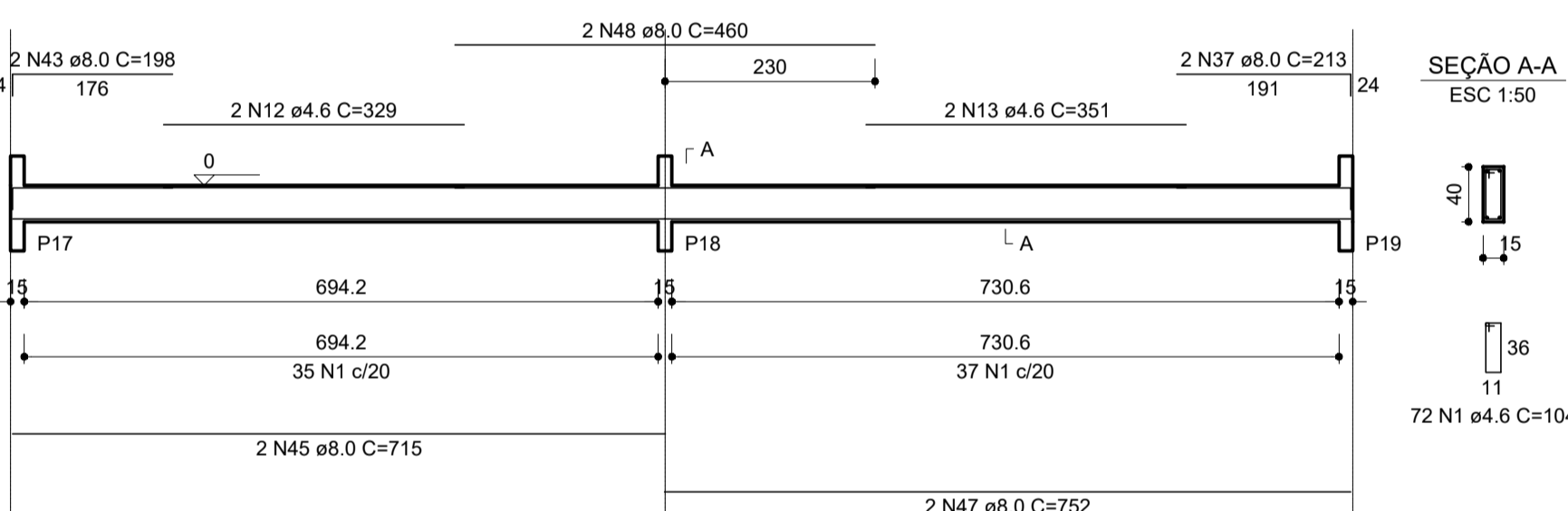
V5
ESC 1:75



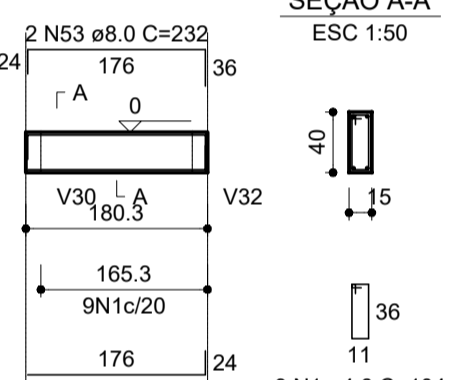
V6
ESC 1:75



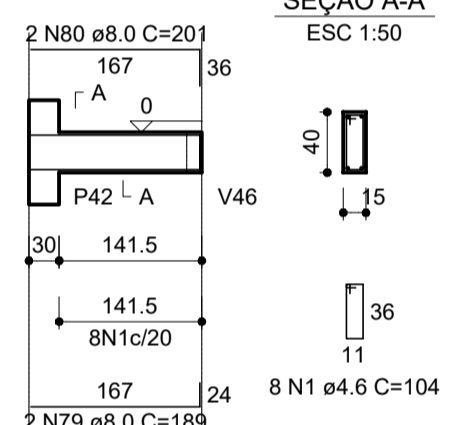
V7
ESC 1:75



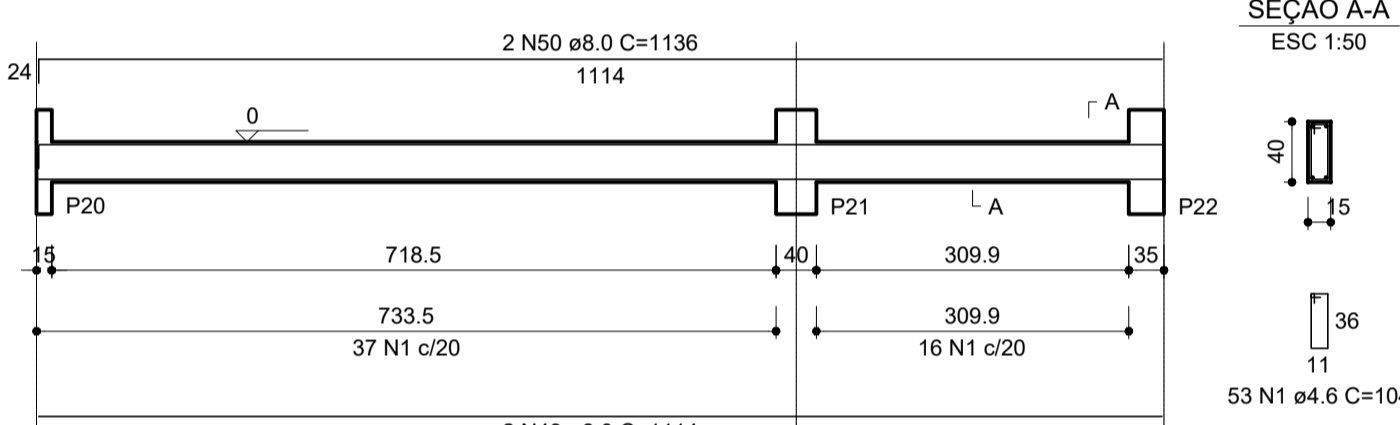
V10
ESC 1:75



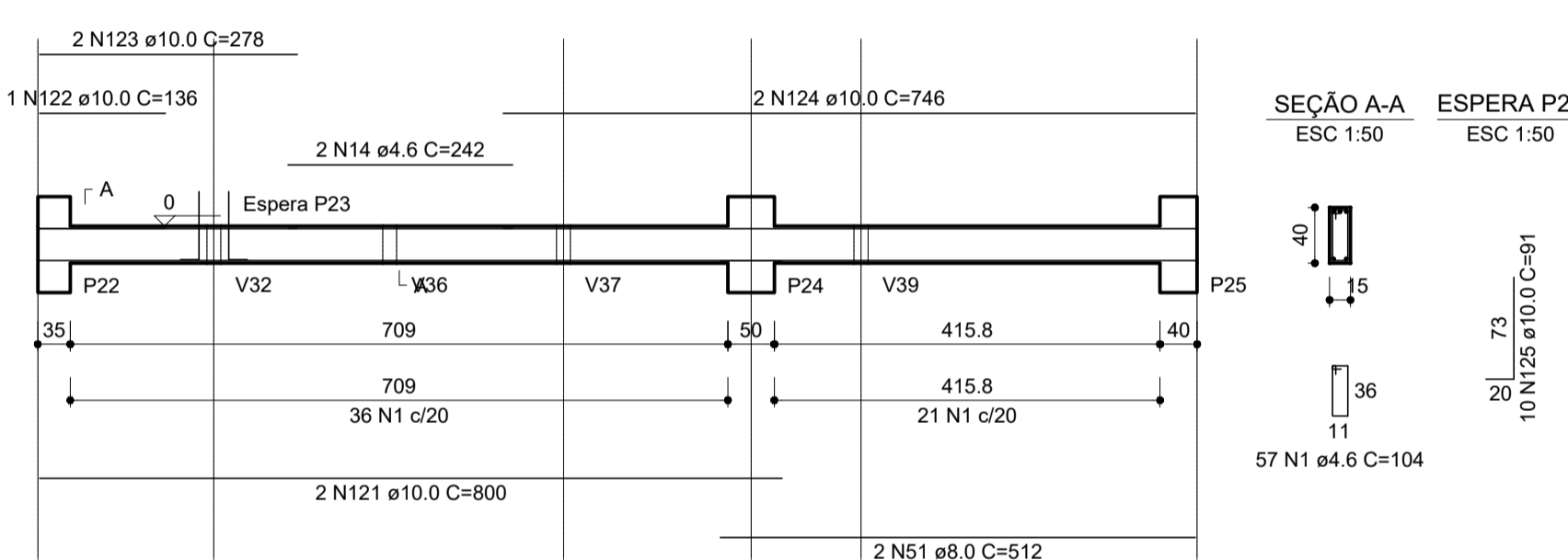
V25
ESC 1:75



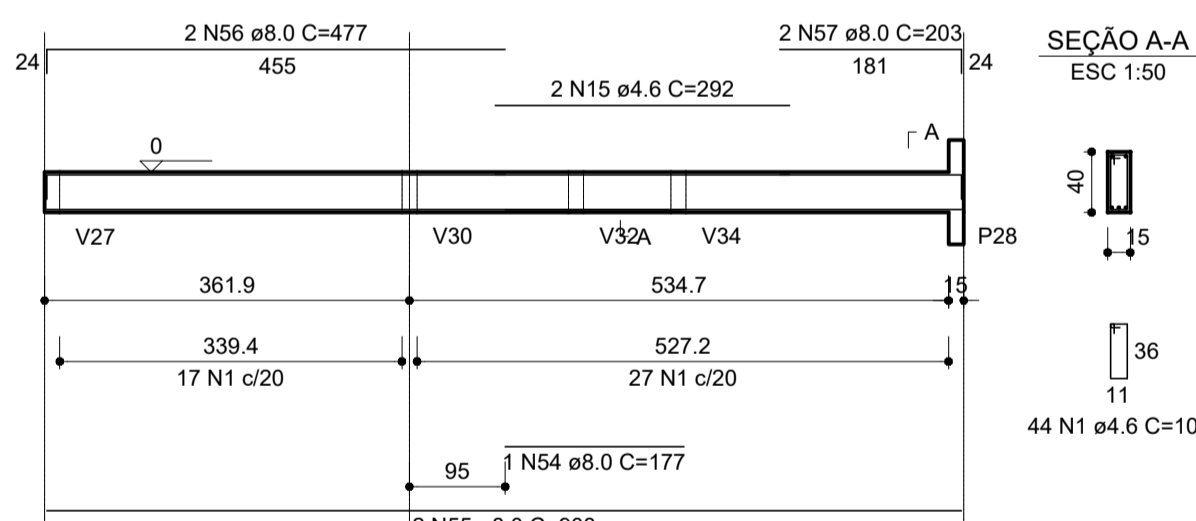
V8
ESC 1:75



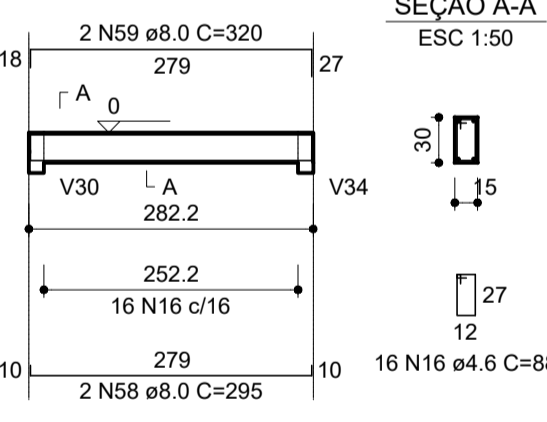
V9
ESC 1:75



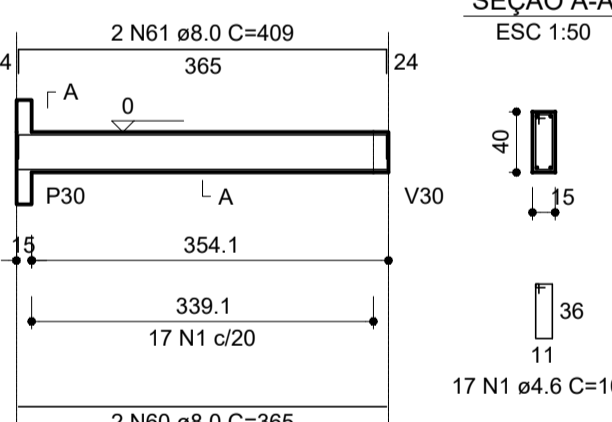
V11
ESC 1:75



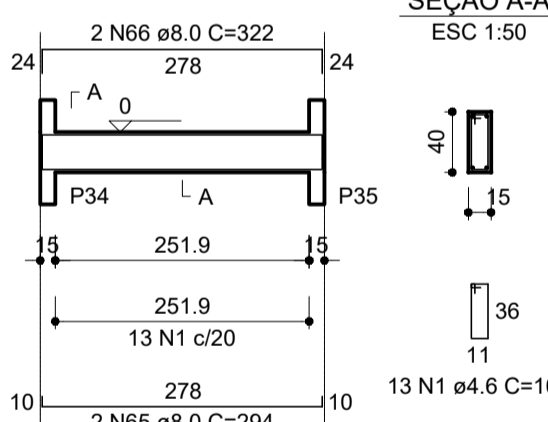
V12
ESC 1:75



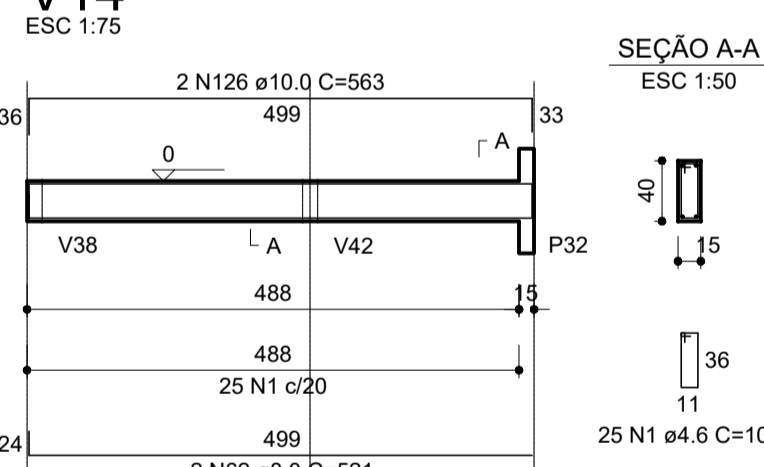
V13
ESC 1:75



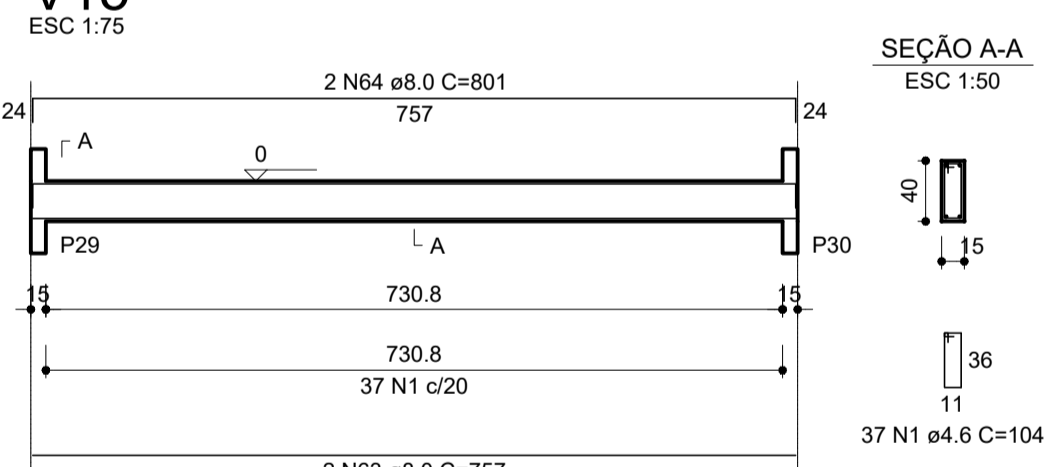
V16
ESC 1:75



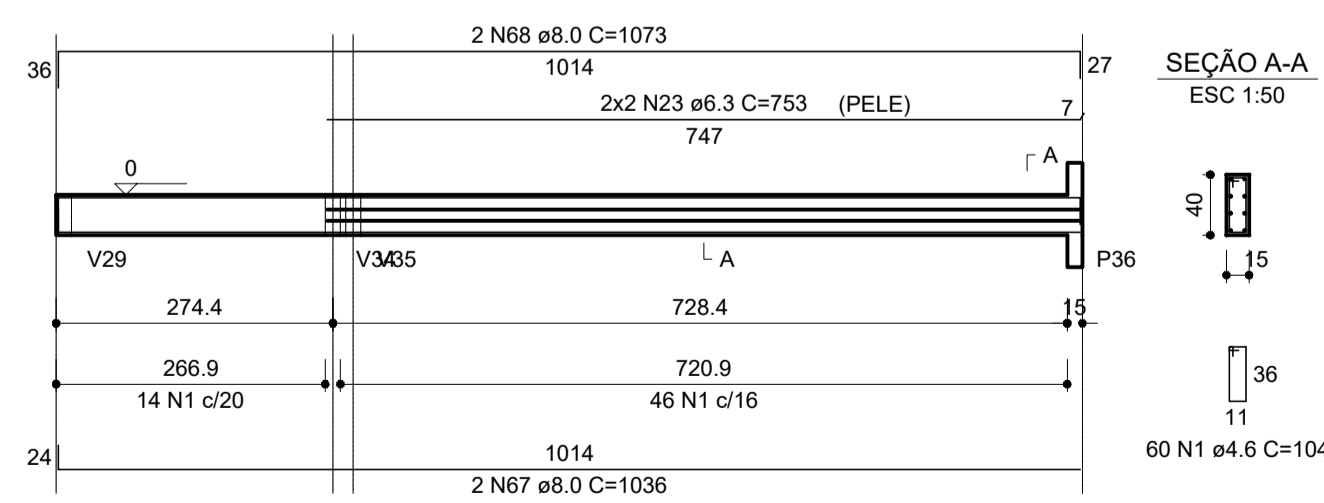
V14
ESC 1:75



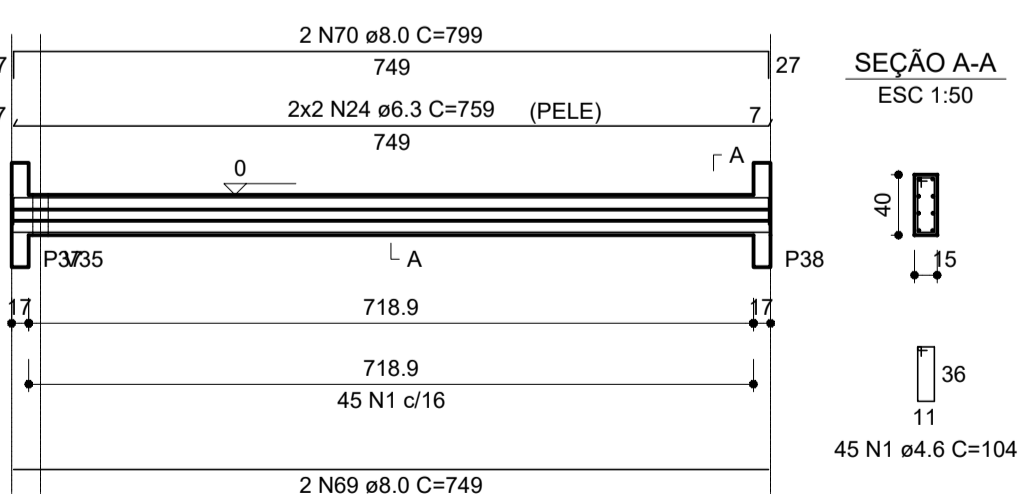
V15
ESC 1:75



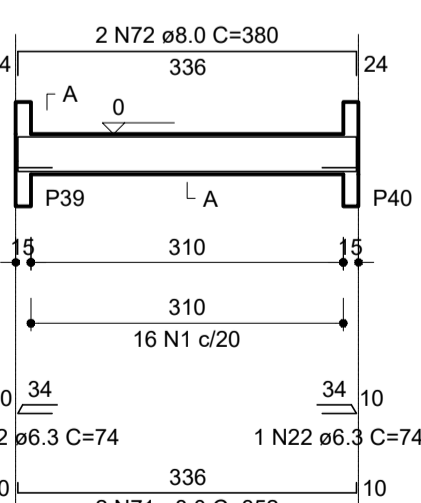
V17
ESC 1:75



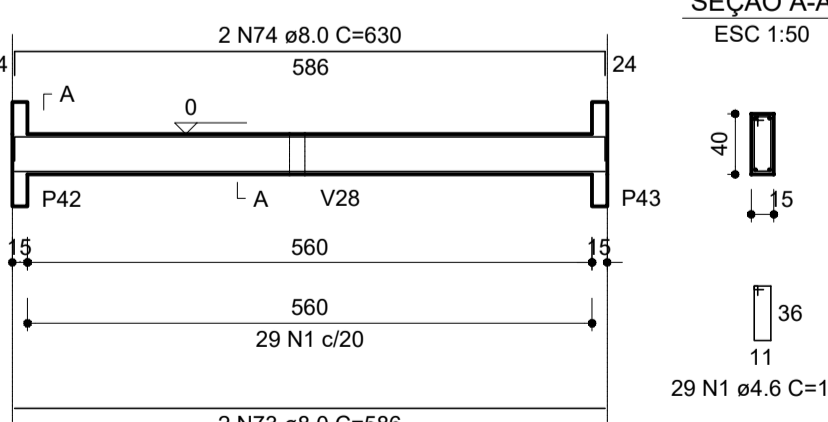
V18
ESC 1:75



V19
ESC 1:75



V20
ESC 1:75



MINISTÉRIO DA DEFESA	ANO	TIPO	FOLHA	PREFEITURA MUNICIPAL DE ITAUBAL DO ESTADO DO AMAPÁ
PCN	2022	EST	02/19	
Programa Galvão Norte	LOCAL	MODIFICAÇÕES		
PREFEITURA MUNICIPAL DE ITAUBAL - AP	MUNICÍPIO DE ITAUBAL - AP			
OBRA			AREA	A -
REVITALIZAÇÃO E AMPLIAÇÃO DO PRÉDIO ADMINISTRATIVO DA PREFEITURA			A = 969,69m²	B -
DETALHES VIGA BALDRAME			C -	
AUTOR	DESENHADOR	DATA	D -	
PAULO HENRIQUE GUIMARÃES TEIXEIRA	PAULO HENRIQUE GUIMARÃES TEIXEIRA	OUTUBRO 2022		
PREFEITO	VEREADOR	PROFESSOR	E -	
JOSÉ SERAFIM PICAÇO FILHO	PAULO HENRIQUE GUIMARÃES TEIXEIRA	METRO		
COORDENADAS	ESC	F -		
9°36'11.4"N 50°41'57.1"W	INDICADA			