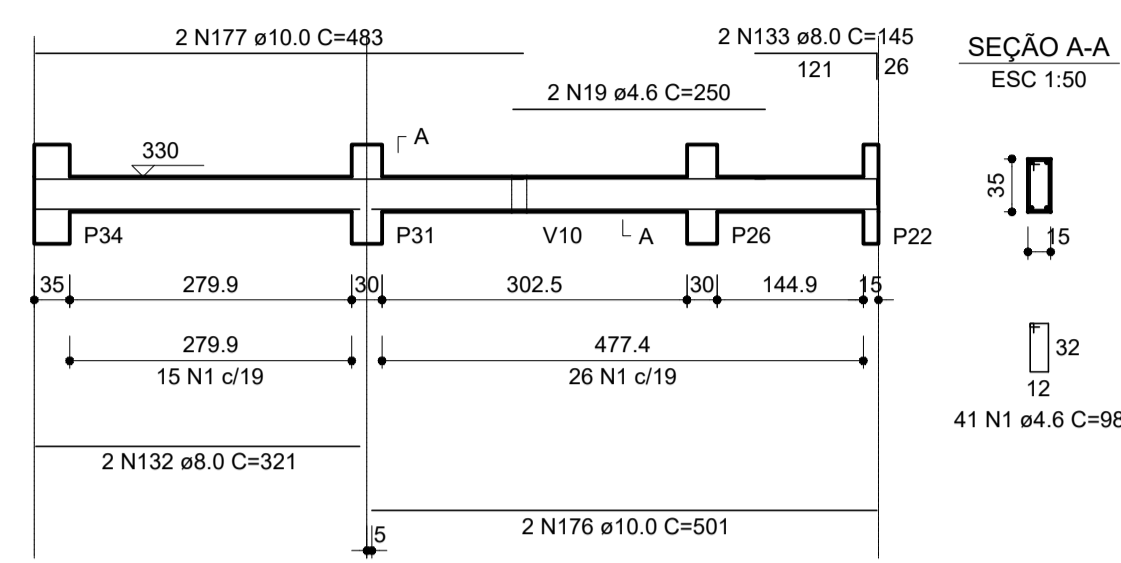
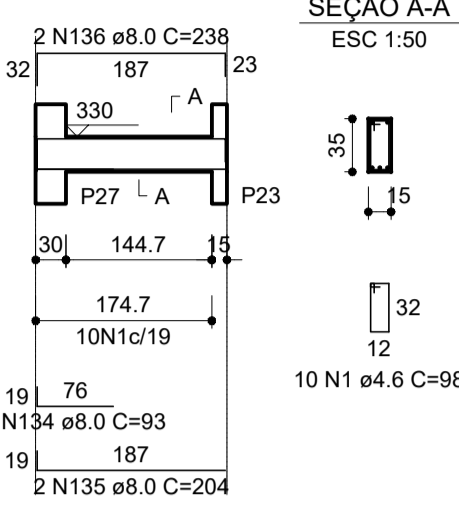


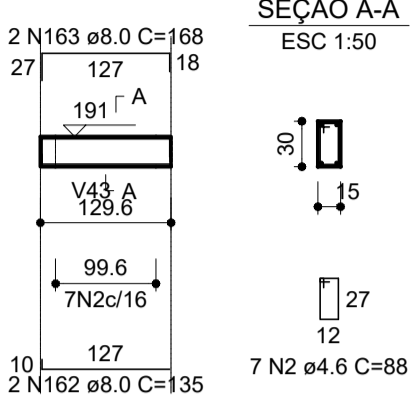
V27
ESC 1:75



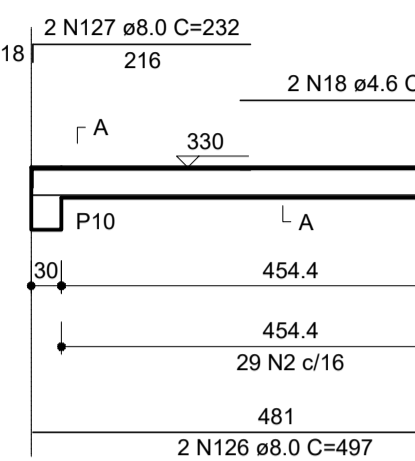
V28
ESC 1:75



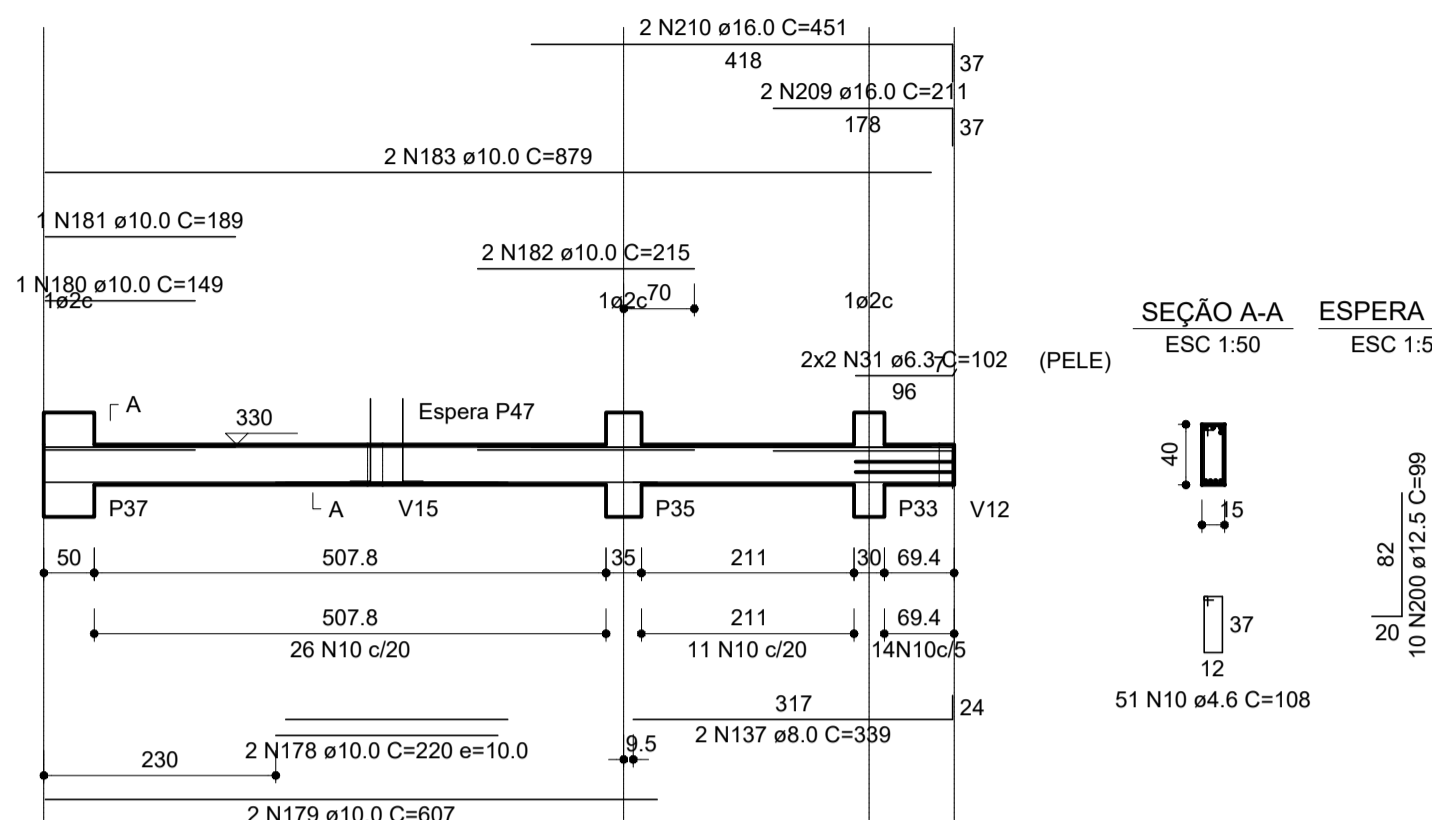
V44
ESC 1:75



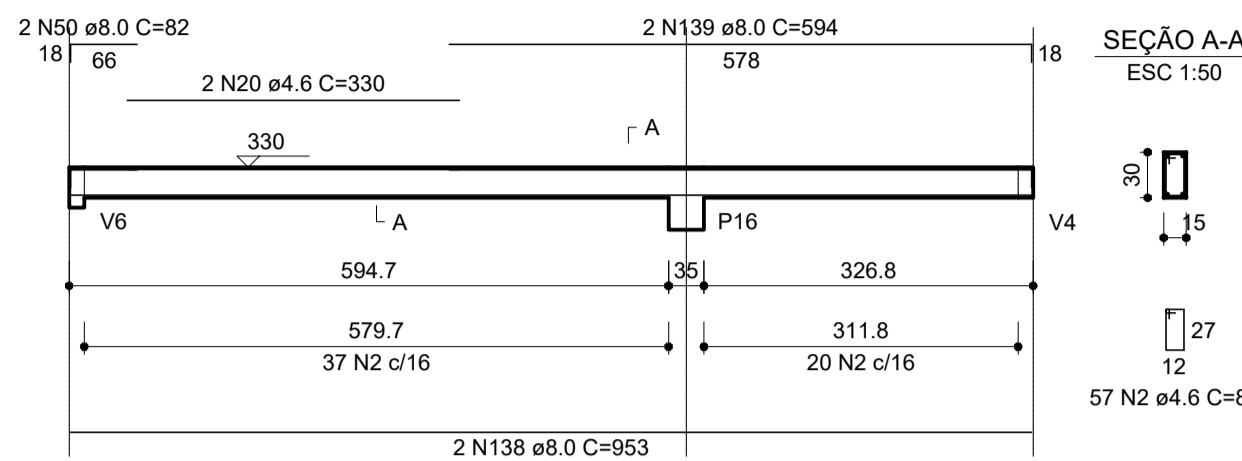
V29
ESC 1:75



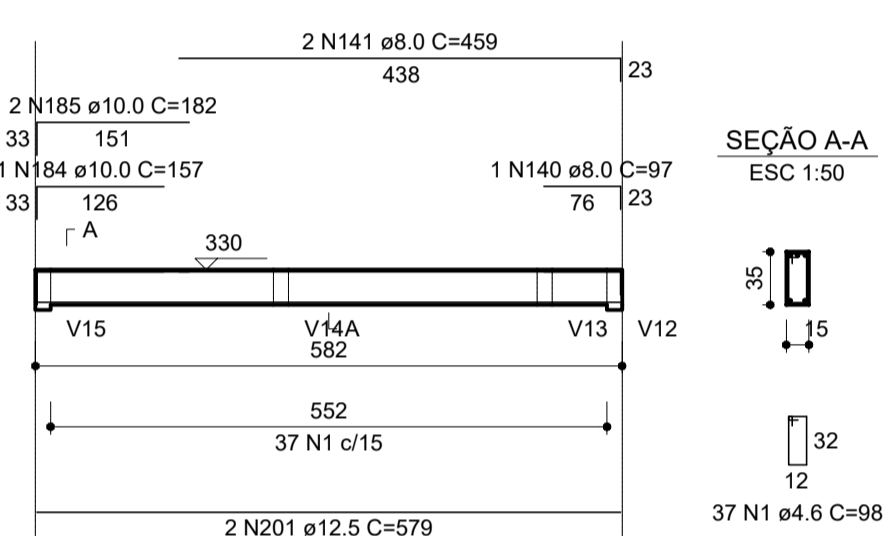
V30
ESC 1:75



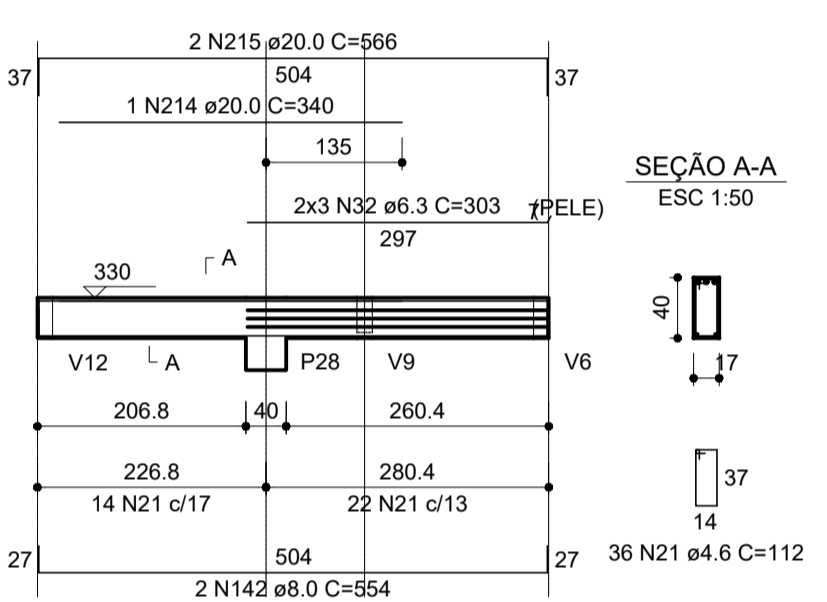
V31
ESC 1:75



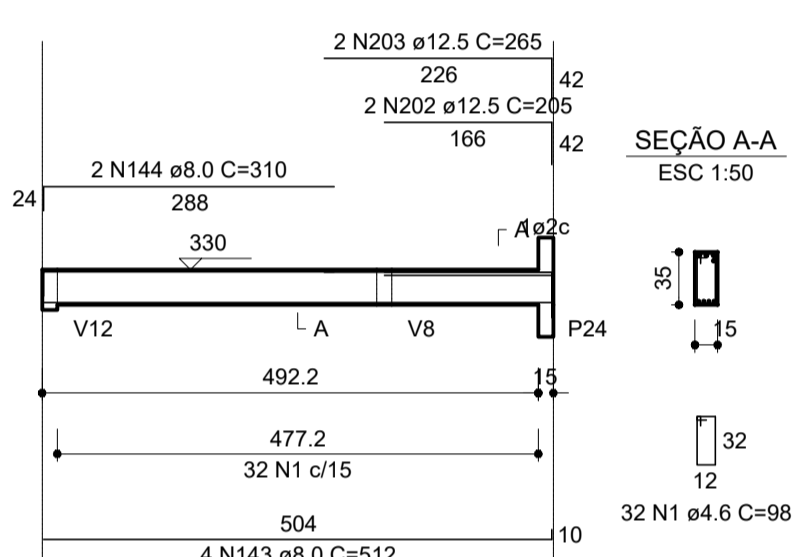
V32
ESC 1:75



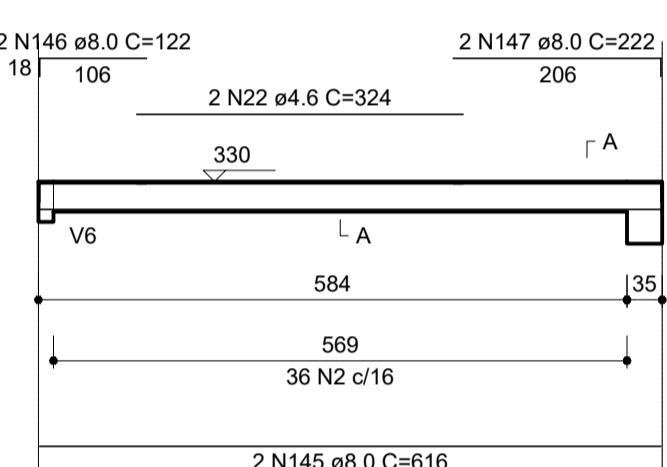
V33
ESC 1:75



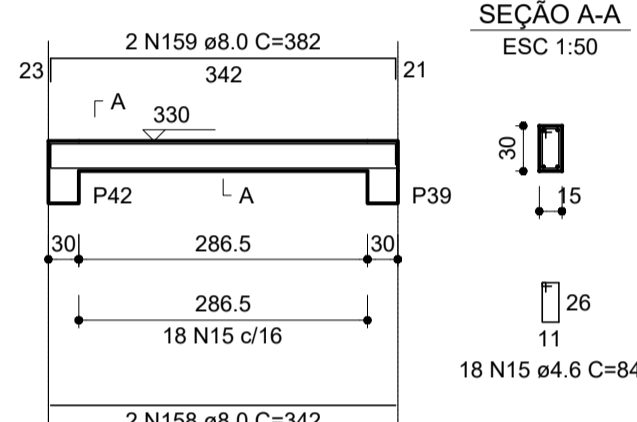
V34
ESC 1:75



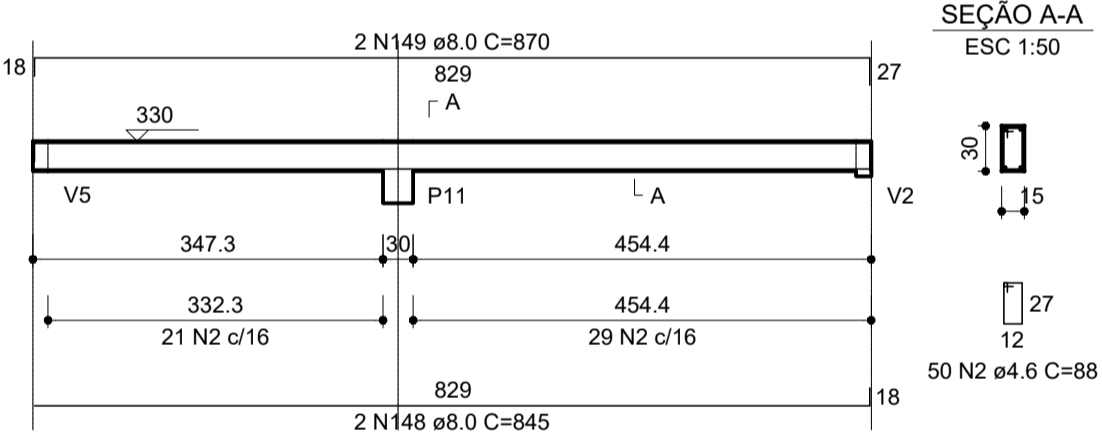
V35
ESC 1:75



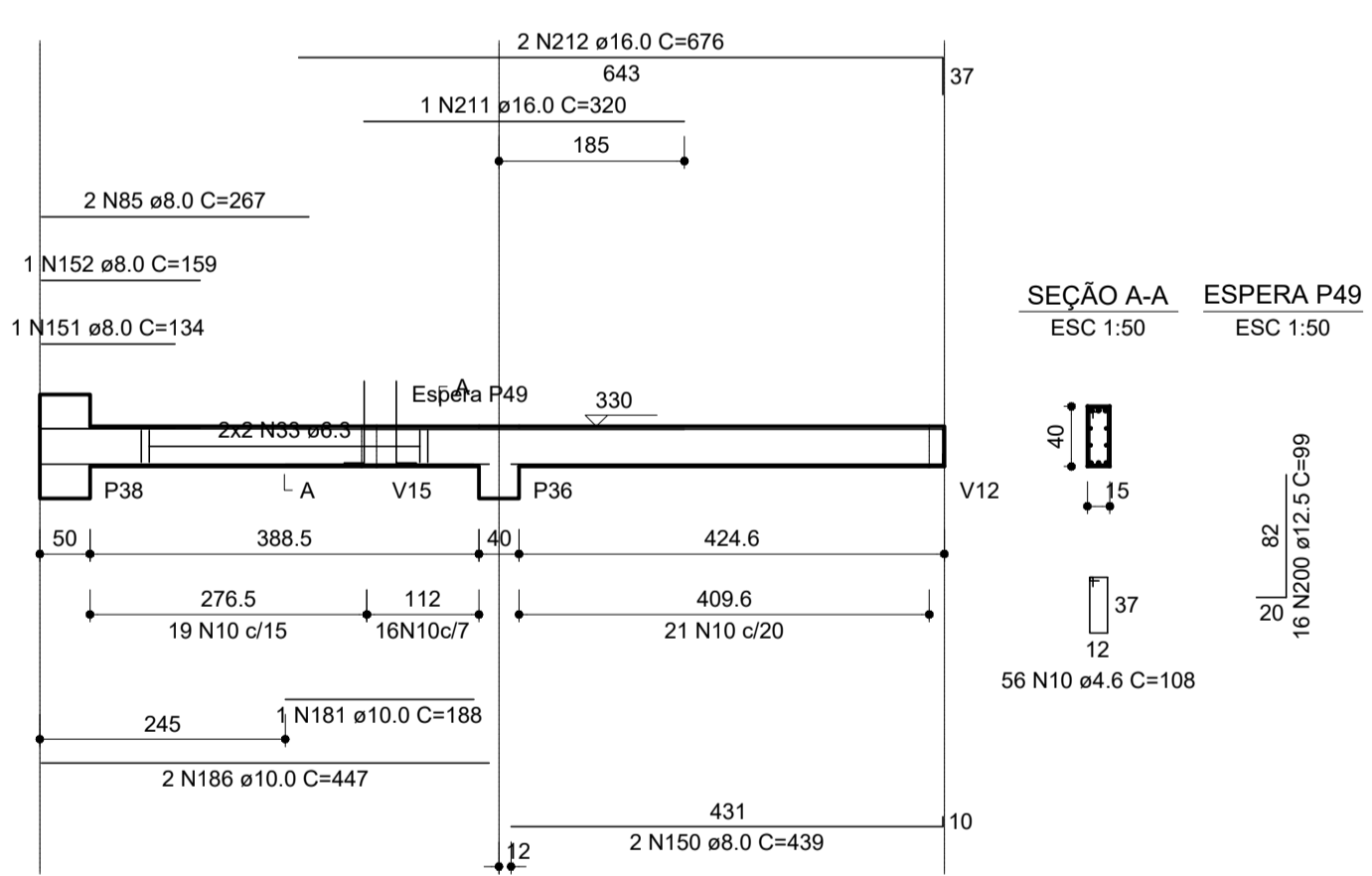
V42
ESC 1:75



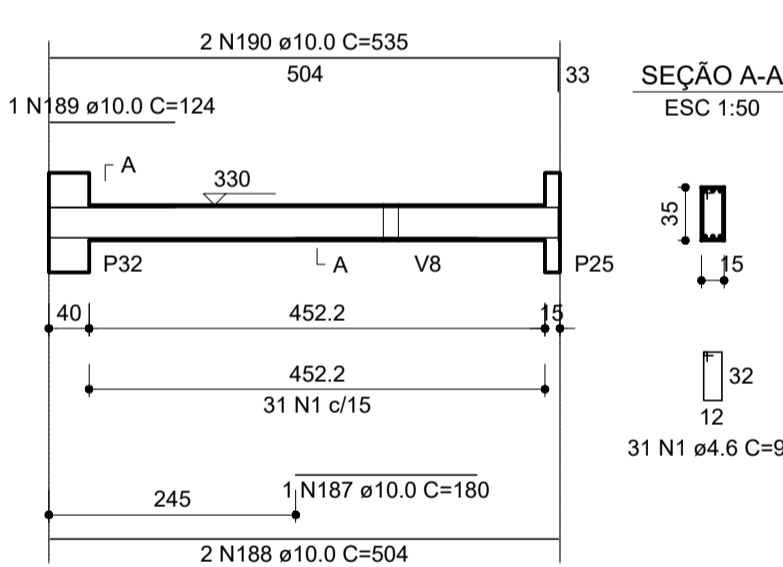
V36
ESC 1:75



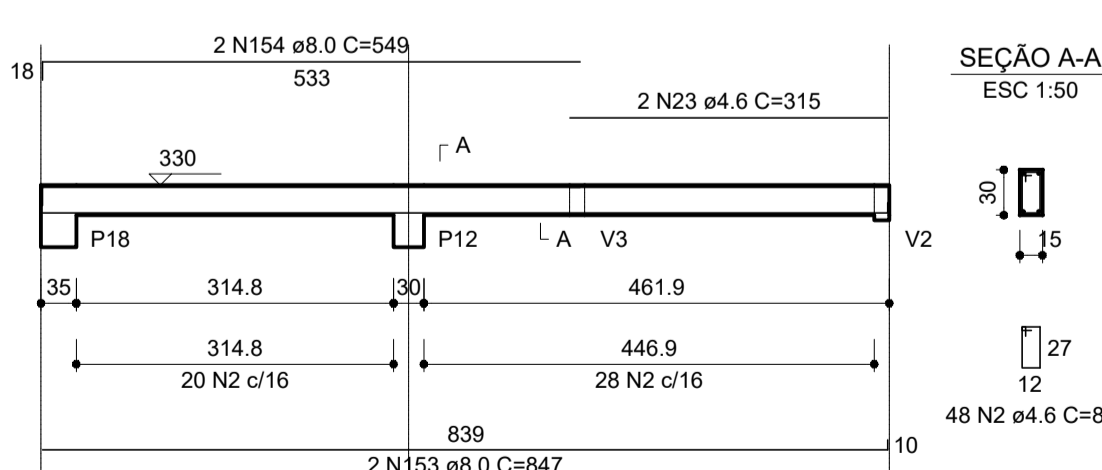
V37
ESC 1:75



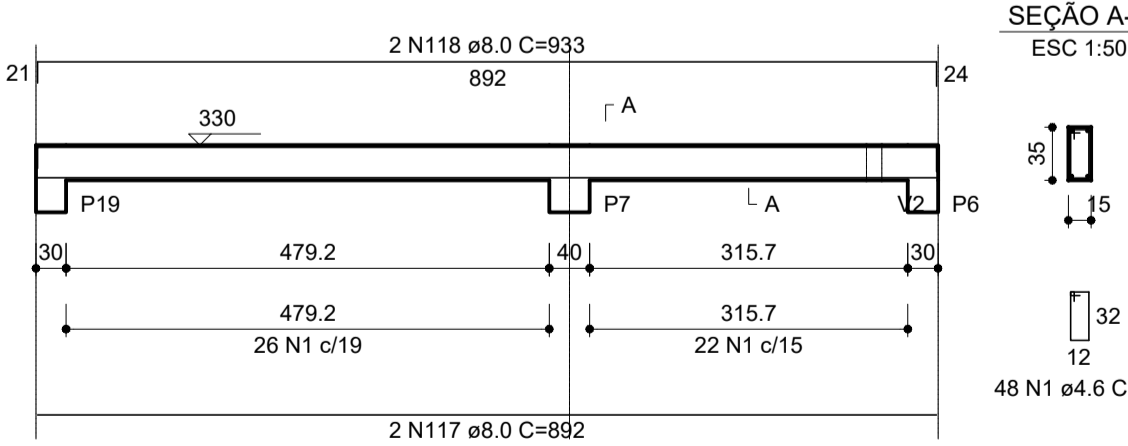
V38
ESC 1:75



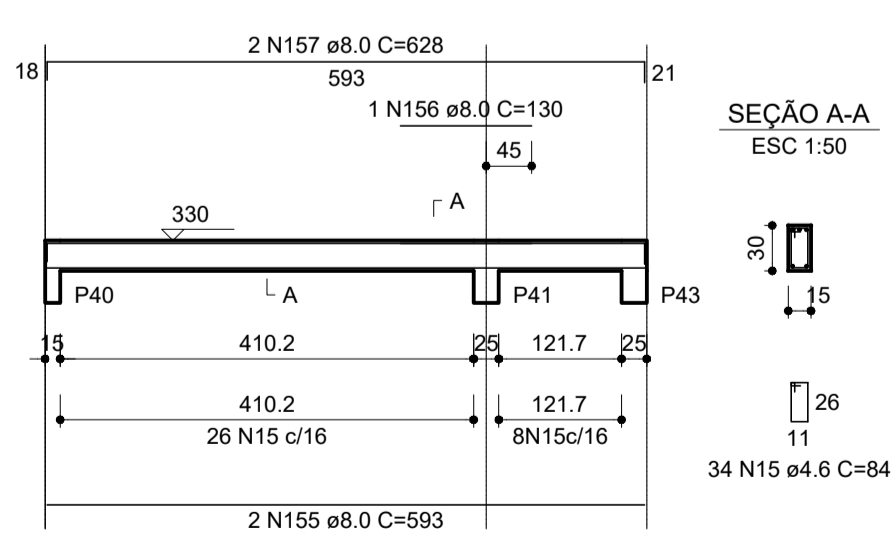
V39
ESC 1:75



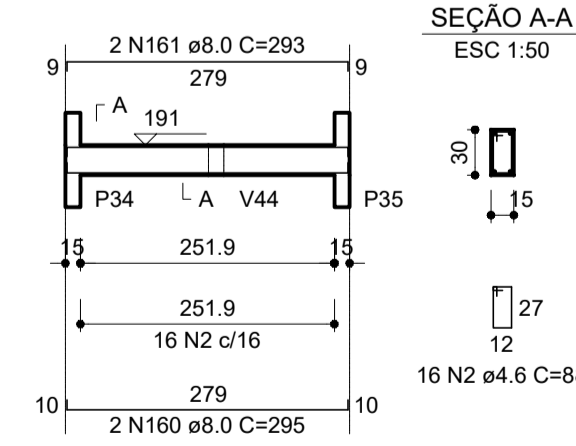
V40
ESC 1:75



V41
ESC 1:75



V43
ESC 1:75



MINISTERIO DA DEFESA	ANO	TIPO	FOLHA	PREFEITURA MUNICIPAL DE ITAUBAL DO ESTADO DO AMAPÁ
PCN	2022	EST	18/19	
Programa Caixa Norte				
CONVENIENTE	LOCAL			MODIFICAÇÕES
PREFEITURA MUNICIPAL DE ITAUBAL - AP	MUNICÍPIO DE ITAUBAL - AP			
OBRA	AREA			
REVITALIZAÇÃO E AMPLIAÇÃO DO PRÉDIO ADMINISTRATIVO DA PREFEITURA	A = 969,69m²			
DETALHES - VIGAS				
AUTOR	DESENHADOR	DATA		
PAULO HENRIQUE GUMARÃES TEIXEIRA	PAULO HENRIQUE GUMARÃES TEIXEIRA	OUTUBRO 2022		
PREFEITO	VISTO	DM		
JOSÉ SERAFIM PICAÇÃO FILHO	Paulo Henrique Guimarães Teixeira	METRO		
COORDENADAS				
9°36'11.4"N 50°41'57.1"W				INDICADA