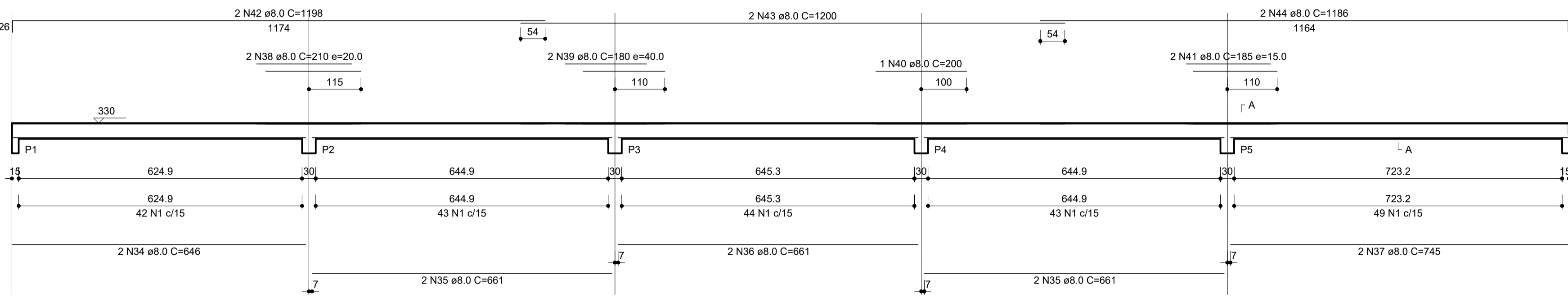
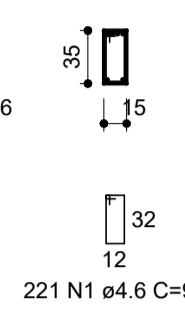


V1
ESC 1:75



SEÇÃO A-A
ESC 1:50



RELAÇÃO DO AÇO

CAÇO	N	DIAM (mm)	QUANT	C. UNIT (cm)	C. TOTAL (cm)
CA60	1	4.6	885	98	86730
CA60	2	4.6	735	98	72630
CA60	3	4.6	2	546	1092
CA60	4	4.6	2	312	644
CA60	5	4.6	2	306	612
CA60	6	4.6	2	302	604
CA60	7	4.6	4	345	1380
CA60	8	4.6	2	351	702
CA60	9	4.6	2	381	762
CA60	10	4.6	426	108	46008
CA60	11	4.6	2	321	642
CA60	12	4.6	2	232	464
CA60	13	4.6	2	116	232
CA60	14	4.6	2	116	232
CA60	15	4.6	126	84	10584
CA60	16	4.6	4	275	1100
CA60	17	4.6	2	307	614
CA60	18	4.6	2	250	500
CA60	19	4.6	2	330	660
CA60	20	4.6	36	112	4032
CA60	21	4.6	2	324	648
CA60	22	4.6	2	315	630
CA60	23	6.3	4	774	3096
CA60	24	6.3	4	1000	4000
CA60	25	6.3	4	90	360
CA60	26	6.3	6	456	1716
CA60	27	6.3	4	969	3876
CA60	28	6.3	2	77	154
CA60	29	6.3	2	77	154
CA60	30	6.3	6	303	1218
CA60	31	6.3	4	102	408
CA60	32	6.3	2	303	606
CA60	33	6.3	4	1900	7600
CA60	34	8.0	2	646	1292
CA60	35	8.0	4	661	2644
CA60	36	8.0	2	661	1322
CA60	37	8.0	2	745	1490
CA60	38	8.0	4	210	840
CA60	39	8.0	3	160	480
CA60	40	8.0	1	200	200
CA60	41	8.0	2	148	296
CA60	42	8.0	2	1198	2396
CA60	43	8.0	10	153	1530
CA60	44	8.0	2	1186	2372
CA60	45	8.0	2	819	1638
CA60	46	8.0	2	1109	2218
CA60	47	8.0	2	1198	2396
CA60	48	8.0	2	1198	2396
CA60	49	8.0	2	758	1516
CA60	50	8.0	2	82	164
CA60	51	8.0	4	182	728
CA60	52	8.0	2	854	1708
CA60	53	8.0	2	876	1752
CA60	54	8.0	2	876	1752
CA60	55	8.0	2	876	1752
CA60	56	8.0	2	187	374
CA60	57	8.0	2	748	1496
CA60	58	8.0	2	388	776
CA60	59	8.0	2	405	810
CA60	60	8.0	2	167	334
CA60	61	8.0	2	761	1522
CA60	62	8.0	2	710	1420
CA60	63	8.0	2	509	1018
CA60	64	8.0	2	752	1504
CA60	65	8.0	2	853	1706
CA60	66	8.0	2	880	1760
CA60	67	8.0	2	430	860
CA60	68	8.0	2	526	1052
CA60	69	8.0	1	561	561
CA60	70	8.0	1	581	581
CA60	71	8.0	2	748	1496
CA60	72	8.0	2	1134	2268
CA60	73	8.0	2	190	380
CA60	74	8.0	2	805	1610
CA60	75	8.0	2	506	1012
CA60	76	8.0	1	119	119
CA60	77	8.0	3	159	477
CA60	78	8.0	2	847	1694
CA60	79	8.0	1	124	124
CA60	80	8.0	2	1091	2182
CA60	81	8.0	2	246	492
CA60	82	8.0	2	287	574
CA60	83	8.0	2	105	210
CA60	84	8.0	2	100	200
CA60	85	8.0	4	267	1068
CA60	86	8.0	2	555	1110
CA60	87	8.0	2	265	530
CA60	88	8.0	2	96	192
CA60	89	8.0	2	548	1096
CA60	90	8.0	3	230	690
CA60	91	8.0	2	578	1156
CA60	92	8.0	2	134	268
CA60	93	8.0	2	134	268
CA60	94	8.0	1	220	220
CA60	95	8.0	1	250	250
CA60	96	8.0	2	295	590
CA60	97	8.0	1	473	473
CA60	98	8.0	2	1175	2350
CA60	99	8.0	2	341	682
CA60	100	8.0	2	282	564
CA60	101	8.0	2	372	744
CA60	102	8.0	2	230	460
CA60	103	8.0	1	131	131
CA60	104	8.0	2	171	342
CA60	105	8.0	1	221	221
CA60	106	8.0	2	263	526
CA60	107	8.0	2	224	448

CAÇO	N	DIAM (mm)	QUANT	C. UNIT (cm)	C. TOTAL (cm)
CA60	108	8.0	1	103	103
CA60	109	8.0	2	148	296
CA60	110	8.0	2	344	688
CA60	111	8.0	2	368	736
CA60	112	8.0	1	285	285
CA60	113	8.0	2	586	1172
CA60	114	8.0	2	179	358
CA60	115	8.0	2	160	320
CA60	116	8.0	2	501	1002
CA60	117	8.0	4	892	3568
CA60	118	8.0	4	933	3732
CA60	119	8.0	2	547	1094
CA60	120	8.0	2	359	718
CA60	121	8.0	2	301	602
CA60	122	8.0	2	391	782
CA60	123	8.0	2	504	1008
CA60	124	8.0	2	142	284
CA60	125	8.0	2	115	230
CA60	126	8.0	4	497	1988
CA60	127	8.0	2	232	464
CA60	128	8.0	2	359	718
CA60	129	8.0	2	391	782
CA60	130	8.0	2	308	616
CA60	131	8.0	3	344	1032
CA60	132	8.0	2	321	642
CA60	133	8.0	2	145	290
CA60	134	8.0	1	93	93
CA60	135	8.0	2	204	408
CA60	136	8.0	2	238	476
CA60	137	8.0	2	339	678
CA60	138	8.0	2	963	1926
CA60	139	8.0	2	994	1988
CA60	140	8.0	1	97	97
CA60	141	8.0	2	459	918
CA60	142	8.0	2	554	1108
CA60	143	8.0	2	512	1024
CA60	144	8.0	2	310	620
CA60	145	8.0	2	616	1232
CA60	146	8.0	2	244	488
CA60	147	8.0	2	222	444
CA60	148	8.0	2	845	1690
CA60	149	8.0	2	870	1740
CA60	150	8.0	2	439	878
CA60	151	8.0	1	134	134
CA60	152	8.0	1	159	159
CA60	153	8.0	2	847	1694
CA60	154	8.0	2	549	1098
CA60	155	8.0	2	593	1186
CA60	156	8.0	1	130	130
CA60	157	8.0	2	628	1256
CA60	158	8.0	2	342	684
CA60	159	8.0	2	382	764
CA60	160	8.0	2	295	590
CA60	161	8.0	2	293	586
CA60	162	8.0	2	135	270
CA60	163	8.0	2	168	336
CA60	164	10.0	2	346	692
CA60	165	10.0	2	487	974
CA60	166	10.0	2	303	606
CA60	167	10.0	2	296	592
CA60	168	10.0	2	748	1496
CA60	169	10.0	2	232	464
CA60	170	10.0	14	91	1274
CA60	171	10.0	2	371	1113
CA60	172	10.0	3	622	1866
CA60	173	10.0	2	186	372
CA60	174	10.0	2	549	1098
CA60	175	10.0	2	501	1002
CA60	176	10.0	2	483	966
CA60	177	10.0	2	220	440
CA60	178	10.0	2	607	1214
CA60	179	10.0	1	149	149
CA60	180	10.0	2	189	378
CA60	181	10.0	2	189	378
CA60	182	10.0	2	215	430
CA60	183	10.0	2	879	1758
CA60	184	10.0	2	147	294
CA60	185	10.0	2	187	374
CA60	186	10.0	2	180	360
CA60	187	10.0	1	180	180
CA60	188	10.0	2	504	1008
CA60	189	10.0	1	124	124
CA60	190	10.0	2	535	1070
CA60	191	12.5	2	571	1142
CA60	192	12.5	2	757	1514
CA60	193	12.5	3	697	2091
CA60	194	12.5	2	315	630
CA60	195	12.5	2	699	1398
CA60	196	12.5	1	185	185
CA60	197	12.5	2	225	450
CA60	198	12.5	2	290	580
CA60	199	12.5	2	503	1006
CA60	200	12.5	26	99	2574
CA60	201	12.5	2	579	1158
CA60	202	12.5	2	205	410
CA60	203	12.5	2	265	530
CA60	204	16.0	20	109	2180
CA60	205	16.0	10	114	1140
CA60	206	16.0	2	291	582
CA60	207	16.0	1	471	471
CA60	208	16.0	3	535	1605
CA60	209	16.0	2	211	422
CA60	210	16.0	2	451	902
CA60	211	16.0	1	320	320
CA60	212	16.0	2	676	1352
CA60	213	20.0	2	742	1484
CA60	214	20.0	1	340	340
CA60	215	20.0	2	566	1132

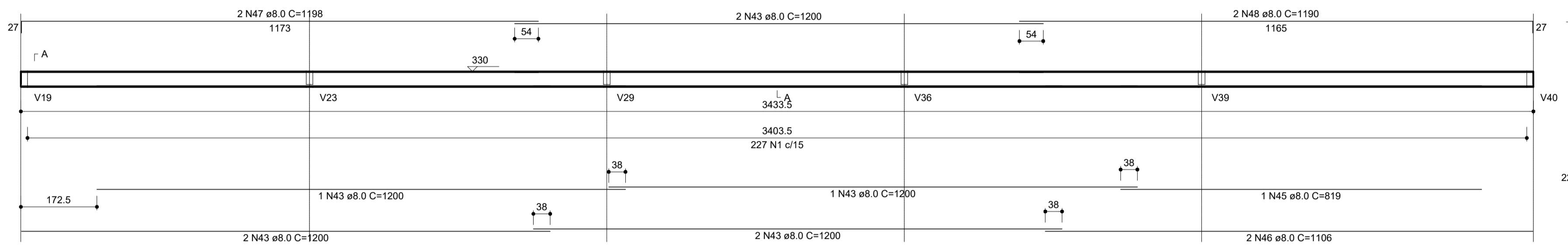
RESUMO DO AÇO

CAÇO	DIAM (mm)	C. TOTAL (m)	PESO (kg)
CA50	6.3	229.8	56.30
CA50	8.0	1326.7	834.04
CA50	10.0	213.8	131.91
CA50	12.5	131	126.15
CA50	16.0	89.7	141.54
CA50	20.0	29.6	72.99
CA60	4.6	2249.9	304.56

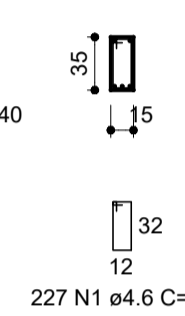
PESO TOTAL (kg)
CA50 1052.92
CA60 304.56

Volume de concreto (C-30) = 19.62 m³
Área de forma = 318.07 m²

V2
ESC 1:75



SEÇÃO A-A
ESC 1:50



V3
ESC 1:75

